

# Staff

## College



**Per Sanderud**  
*President*



**Sverrir Haukur  
Gunnlaugsson**  
*College Member*



**Kurt Jaeger**  
*College Member*

## College assistants



**Janecke Aarnæs**  
*Officer*  
tel: +32 2 286 18 25  
jaa@eftasurv.int



**Kristina Granaas**  
*Assistant*  
tel: +32 2 286 18 21  
kgr@eftasurv.int

58

## Administration



**Erik J. Eidem**  
*Director of Administration*  
tel: +32 2 286 18 90  
eje@eftasurv.int



**Sophie Jeannon**  
*Assistant*  
tel: +32 2 286 18 93  
sje@eftasurv.int



**Ólafur Aðalsteinsson**  
*Deputy Director*  
tel: +32 2 286 18 95  
oad@eftasurv.int



**Gisle Solstad**  
*Head of Finance*  
gso@eftasurv.int



**Battista Vailati**  
*Senior Officer*  
tel: +32 2 286 18 97  
bva@eftasurv.int



**Kurt Scheerlinck**  
*Officer*  
tel: +32 2 286 18 96  
ksc@eftasurv.int



**Ylva Bråten**  
*Officer*  
tel: +32 2 286 18 37  
ybr@eftasurv.int



**Robin Parren**  
*Assistant*  
tel: +32 2 286 18 19  
rpa@eftasurv.int

## Competition & State Aid Directorate



**Per Andreas Bjørgan**  
*Director*  
tel: +32 2 286 18 36  
pab@eftasurv.int



**Elin Heidebroek**  
*Assistant*  
tel: +32 2 286 18 51  
ehe@eftasurv.int

### Competition



**Tormod Johansen**  
*Deputy Director*  
tel: +32 2 286 18 41  
tjo@eftasurv.int



**Agnieszka  
Montoya-Iwanczuk**  
*Senior Officer*  
tel: +32 2 286 18 59  
ami@eftasurv.int



**Hanne Zimmer**  
*Senior Officer*  
tel: +32 2 286 18 87  
hzi@eftasurv.int



**Kjell-Arild Rein**  
*Officer*  
tel: +32 2 286 18 86  
kar@eftasurv.int



**Peter Turner-Kerr**  
*Officer*  
tel: +32 2 286 18 54  
ptk@eftasurv.int



**Jonas Pålshammar**  
*Temporary Officer*  
tel: +32 2 286 18 34  
jpa@eftasurv.int



**Tonje Fingalsen**  
*Trainee*  
tel: +32 2 286 18 18  
tfi@eftasurv.int



**Haukur Logi Karlsson**  
*Trainee*  
tel: +32 2 286 18 40  
hka@eftasurv.int

59

### State aid



**María Jesús Segura Catalán**  
*Deputy Director*  
tel: +32 2 286 18 53  
mse@eftasurv.int



**Marianne Clayton**  
*Senior Officer*  
tel: +32 2 286 18 23  
mcl@eftasurv.int



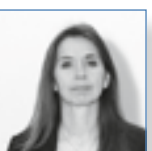
**Lena Sandberg-Mørch**  
*Senior Officer*  
tel: +32 2 286 18 69  
lsa@eftasurv.int



**Marie Wiersholm**  
*Senior Officer*  
tel: +32 2 286 18 65  
mwi@eftasurv.int



**Dylan Hughes**  
*Officer*  
tel: +32 2 286 18 80  
dhu@eftasurv.int



**Sif Konráðsdóttir**  
*Officer*  
tel: +32 2 286 18 55  
sko@eftasurv.int



**Christian Jordal**  
*Temporary officer*  
tel: +32 2 286 18 89  
cjo@eftasurv.int



**Katharina Kraak**  
*Temporary Officer*  
tel: +32 2 286 18 13  
kkra@eftasurv.int

## Internal Market Affairs Directorate



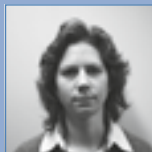
**Hallgrímur Ásgeirsson**  
*Director*

tel: +32 2 286 18 60  
has@eftasurv.int



**Danielle De Berger**  
*Assistant*

tel: +32 2 286 18 61  
ddb@eftasurv.int



**Sandra Gerdts**  
*Assistant*

tel: +32 2 286 18 71  
sge@eftasurv.int



**Lindsay Jore**  
*Assistant*

tel: +32 2 286 18 72  
ljo@eftasurv.int

### General Internal Market



**Tuula Nieminen**  
*Deputy Director*

tel: +32 2 286 18 67  
tni@eftasurv.int



**Rúnar Örn Olsen**  
*Senior Officer*

tel: +32 2 286 18 52  
rol@eftasurv.int



**Claire Koeniguer**  
*Senior Officer*

tel: +32 2 286 18 63  
clk@eftasurv.int



**Raphaël Meyer**  
*Officer*

tel: +32 2 286 18 44  
rme@eftasurv.int



**Eirik Ihlen**  
*Officer*

tel: +32 2 286 18 78  
eih@eftasurv.int



**Steven Verhulst**  
*Officer*

tel: +32 2 286 18 58  
sve@eftasurv.int



**Joakim Zander**  
*Officer*

tel: +32 2 286 18 76  
jza@eftasurv.int



**Ingvar Sverrisson**  
*Officer*

tel: +32 2 286 18 32  
isv@eftasurv.int



**Bernhard Zaglmayer**  
*Officer*

tel: +32 2 286 18 85  
bza@eftasurv.int



**Alfonso Cercas**  
*Officer*

tel: +32 2 286 18 15  
ace@eftasurv.int



**Nora Zenhäusern**  
*Temporary Officer*

tel: +32 2 286 18 70  
nze@eftasurv.int



**Finnur Loftsson**  
*Trainee*

tel: +32 2 286 18 56  
flo@eftasurv.int



**Dag Sørli Lund**  
*Trainee*

tel: +32 2 286 18 92  
dlu@eftasurv.int

### Transport



**Ástríður Scheving  
Thorsteinsson**  
*Deputy Director*

tel: +32 2 286 18 79  
asc@eftasurv.int



**Einar Hannesson**  
*Senior Officer*

tel: +32 2 286 18 43  
eha@eftasurv.int



**Camilla Rise**  
*Senior Officer*

tel: +32 2 286 18 83  
cri@eftasurv.int



**Andreas Breivik**  
*Officer*

tel: +32 2 286 18 57  
abr@eftasurv.int



**Dag Kristoffer Hansen**  
*Officer*

tel: +32 2 286 18 42  
dkh@eftasurv.int



**Erna Jónsdóttir**  
*Temporary Officer*

tel: +32 2 286 18 82  
ejo@eftasurv.int

## Food Safety



**Ólafur Valsson**  
*Deputy Director*  
tel: +32 2 286 18 68  
ova@eftasurv.int



**Luca Farina**  
*Senior Officer*  
tel: +32 2 286 18 62  
lfa@eftasurv.int



**Patricia González Gálvez**  
*Senior Officer*  
tel: +32 2 286 18 75  
pgo@eftasurv.int



**Helen Pope**  
*Senior Officer*  
tel: +32 2 286 18 38  
hpo@eftasurv.int



**Rögnvaldur Ingólfsson**  
*Officer*  
tel: +32 2 286 18 81  
rin@eftasurv.int



**Janne Britt Krakhellen**  
*Officer*  
tel: +32 2 286 18 77  
jbk@eftasurv.int

Legal &  
Executive  
Affairs  
Directorate

**Xavier Lewis**  
*Director*  
tel: +32 2 286 18 30  
xle@eftasurv.int



**Claire Taylor**  
*Assistant*  
tel: +32 2 286 18 31  
cta@eftasurv.int



**Bjørnar Alterskjær**  
*Deputy Director*  
tel: +32 2 286 18 98  
bal@eftasurv.int



**Lorna Armati**  
*Senior Officer*  
tel: +32 2 286 18 39  
lar@eftasurv.int



**Ólafur Einarsson**  
*Senior Officer*  
tel: +32 2 286 18 73  
oei@eftasurv.int



**Florence Simonetti**  
*Officer*  
tel: +32 2 286 18 33  
fsi@eftasurv.int



**Markus Schneider**  
*Officer*  
tel: +32 2 286 18 84  
msc@eftasurv.int



**Ida Hauger**  
*Temporary Officer*  
tel: +32 2 286 18 74  
iha@eftasurv.int



**Jóhanna Katrín Magnúsdóttir**  
*Trainee*  
tel: +32 2 286 18 12  
jma@eftasurv.int

The following  
left the Authority  
in 2009



**Kristján Andri Stefánsson**  
*College*

**Brevik, Birgitte – CSA**  
**Ristiluoma, Tuija – IMA**  
**Behringer, Ragnhild – IMA**  
**Thygesen, Inge – LEA**  
**Hodgson, Mia – IMA**  
**Gunnæs, Anne – ADM**  
**Hillger, Jens – IMA**  
**Rykhus, Ketil – IMA**  
**Lusweti, Jean – ADM**  
**Fenger, Niels – LEA**  
**Kliemann, Annette – CSA**  
**Bjerkebo, Kjersti – CSA**

Additional information on the EFTA Surveillance Authority is available at <http://www.eftasurv.int>

The electronic version of the EFTA Surveillance Authority Annual Reports may be found at <http://www.eftasurv.int/information/annualreports>

© 2010 EFTA Surveillance Authority

ISSN: 1373-1793

Photo credits:

Pascal Broze (pp. 3, 6, 9, 10, 13, 26, 32, 34, 41, 45, 46, 48, 53, 54 and 57)

Fotolia (pp. 17, 29 and 31)

iStockPhoto (pp. 16, 21, 29, 36 and 38)

Ståle Johnsen (p. 18)

ScandinavianStockPhoto (pp. 19, 23, 24, 27, 49 and 51)

Philippe Vandeputte (pp. 20 and 22)

Design by Tipik Communication Agency

## EFTA Surveillance Authority

Rue Belliard 35  
B-1040 Brussels  
Belgium

Tel. +32 2 286 18 11

Fax +32 2 286 18 10

E-mail: [registry@eftasurv.int](mailto:registry@eftasurv.int)

Internet: <http://www.eftasurv.int>