

COUNTRY PROFILE

PART 1

ICELAND

Competent authority control systems

in the areas of

**food and feed safety, animal health and animal
welfare**

Table of Contents

INTRODUCTION	3
1 COMPETENT AUTHORITIES AND IMPLEMENTATION OF REQUIREMENTS	4
1.1 Designation of competent authorities	4
1.2 Resources for performance of controls	11
1.3 Organisation and implementation of official controls	12
1.4 Enforcement measures	13
1.5 Verification and review of official controls	13
1.6 Multi-annual national control plan (MANCP) and annual reports	15
2 ORGANISATION OF RESPONSIBILITIES IN RELATION TO CONTROL SYSTEMS	18
2.1 Control system for animal health	18
2.2. Control system for food of animal origin	22
2.3. Control system for imports of animals, germinal products and food of animal origin	24
2.4. Control system for feeding stuffs and animal nutrition	28
2.5. Control system for Transmissible Spongiform Encephalopathy (TSE)	30
2.6. Control system for Animal By-Products (ABP).....	32
2.7. Control system for veterinary medicinal products (VMP) and residues	33
2.8. Control system for foodstuffs and food hygiene	37
2.9. Control system for imports of food of non-animal origin	40
2.10 Control system for plant protection products (PPP) and residues.....	42
2.11. Control system for animal welfare	45
2.12 Control system for organic production	47
ANNEX I – ACRONYMS, ABBREVIATIONS AND SPECIAL TERMS	48

INTRODUCTION

This country profile has been drawn up by Iceland in cooperation with the EFTA Surveillance Authority (“the Authority”) to present in a summary form the latest information available on the Icelandic control systems related to food and feed safety, animal health and welfare. Plant health is not part of the country profile as it does not fall under the Agreement of the European Economic Area (“the EEA Agreement”, “the Agreement”).

The information in this country profile has been compiled from:

- Recent written submissions and background documentation from the Icelandic competent authorities detailing how control systems are organised.
- The results of the EFTA Surveillance Authority’s missions to Iceland in recent years and, in particular, a general review mission in Iceland which took place in January 2023.

This country profile is presented in two main chapters:

Chapter 1 describes the overall organisation of the Icelandic authorities and the respective responsibilities of the relevant ministries in relation to the different components of the control system.

Chapter 2 gives a more detailed description of the different control systems that form the complete range of official controls in Iceland and cover the whole chain of animal, feed and food production.

This country profile is to be updated at least every three years pursuant to the EFTA Surveillance Authority’s missions or additional relevant information being submitted by the Icelandic competent authorities.

Acronyms are used extensively throughout this report for the sake of brevity. A list of acronyms, abbreviations and special terms is given in Annex I.

1 Competent Authorities and implementation of requirements

1.1. Designation of competent authorities

The main Icelandic legislation in relation to designation of competent authorities for food, feed, animal health and animal welfare are:

- Act No 93/1995 on Food;
- Act No 25/1993 on Animal Diseases and Preventive Measures;
- Act on Veterinarians and Animal Health, No 66/1998;
- Act on Control of Feed, Fertiliser and Seed, No 22/1994;
- Act on the Food and Veterinary Authority, No 30/2018;
- Act on Hygiene and Pollution Control, No 7/1998;
- Act on Animal Welfare, No 55/2013;
- Act on Livestock management, No 38/2013;
- Regulation No 102/2010, incorporating Regulation (EC) No 178/2002 laying down the general principles and requirements of food law, establishing the European Food Safety Authority and laying down procedures in matters of food safety;
- Regulation No 103/2010, incorporating Regulation (EC) No 852/2004 on the hygiene of foodstuffs;
- Regulation No 104/2010, incorporating Regulation (EC) No 853/2004 laying down specific hygiene rules for food of animal origin;
- Regulation No 234/2020, incorporating Regulation (EC) No 2017/625 on official controls and other official activities performed to ensure the application of food and feed law, rules on animal health and welfare, plant health and plant protection products, amending Regulations (EC) No 999/2001, (EC) No 396/2005, (EC) No 1069/2009, (EC) No 1107/2009, (EU) No 1151/2012, (EU) No 652/2014, (EU) 2016/429 and (EU) 2016/2031 of the European Parliament and of the Council, Council Regulations (EC) No 1/2005 and (EC) No 1099/2009 and Council Directives 98/58/EC, 1999/74/EC, 2007/43/EC, 2008/119/EC and 2008/120/EC, and repealing Regulations (EC) No 854/2004 and (EC) No 882/2004 of the European Parliament and of the Council, Council Directives 89/608/EEC, 89/662/EEC, 90/425/EEC, 91/496/EEC, 96/23/EC, 96/93/EC and 97/78/EC and Council Decision 92/438/EEC (Official Controls Regulation)
- Regulation No 107/2010, incorporating Regulation (EC) No 183/2005 laying down requirements for feed hygiene.
- Regulation No 674/2017 incorporating Regulation (EC) No 1069/2009 laying down health rules as regards animal by-products and derived products not intended for human consumption and Regulation (EU) No 142/2011 implementing Regulation (EC) No 1069/2009 and Council Directive 97/78/EC
- Regulation no. 205/2023 incorporating Regulation (EU) no 2018/848 on organic production and labelling of organic products.

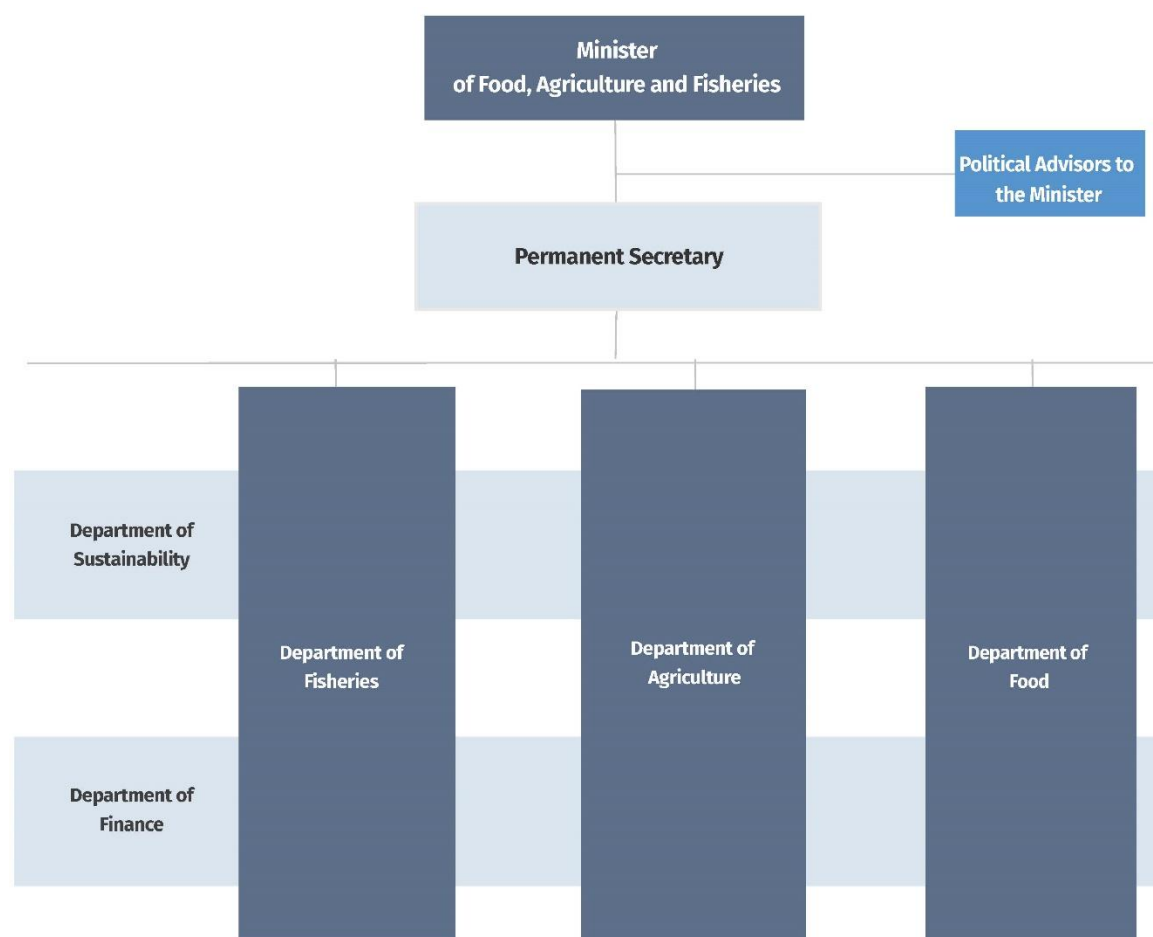
Ministry of Food, Agriculture and Fisheries (MoFAF)

The Ministry of Food, Agriculture and Fisheries (MoFAF) is the lead Ministry for policy making, co-ordination and transposition of legislation concerning food and feed, veterinary and phytosanitary matters. Within the Ministry, the Department of Food is responsible for policy development, co-ordination and legislative matters (including the transposition of EEA legislation) regarding food and feed, veterinary issues, organic

production, phytosanitary matters and drinking water. The Department of Agriculture is responsible for issues related to animal welfare.

The Ministry is also administratively responsible for the Icelandic Food and Veterinary Authority (MAST) and the Directorate of Fisheries (DoF).

Picture 1. MoFAF organisation chart:



Icelandic Food and Veterinary Authority (MAST)

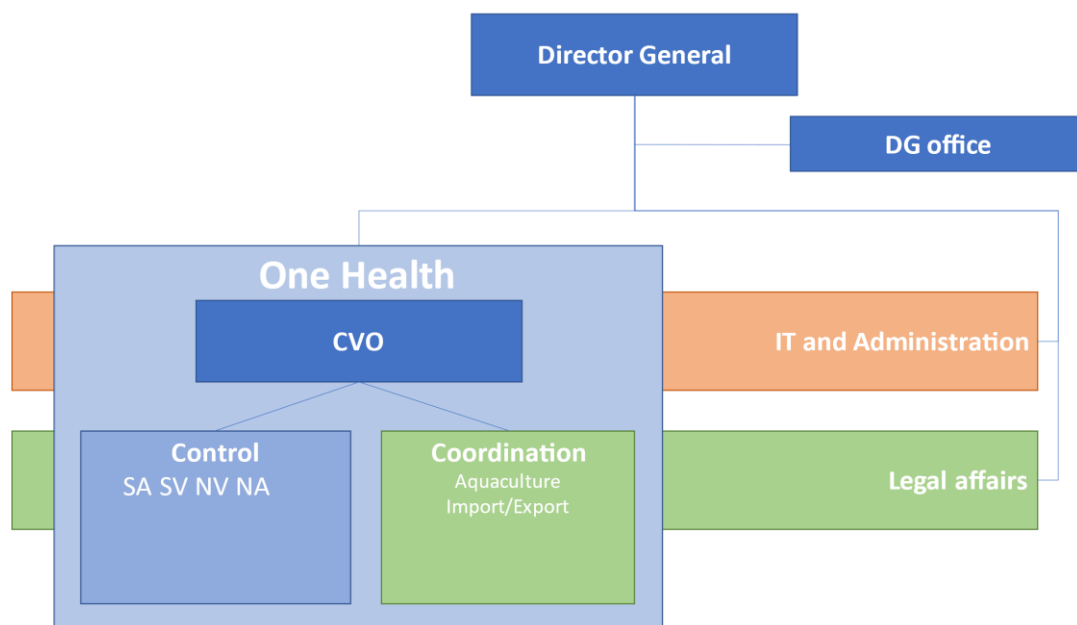
Since 1st of January 2008, MAST is the central competent authority for food and feed safety, animal health and animal welfare and operates under the auspice of MoFAF. The organisation and structure of MAST is based on provisions of Act (IS) No 30/2018. MAST operates four district offices and a division of import and export and is responsible for operation of several Border Control Posts (BCPs) for control of import of foods from third countries (non-EEA States).

MAST's primary roles are:

- Food safety; control of primary production of animal origin, production of foodstuffs of animal origin and import and export control of all foodstuffs;
- Control of organic production
- Controls regarding animal health and animal welfare;
- Plant protection services;
- Feed (including fish meal), seed and fertiliser services;
- Meat classification services;
- Disease control and prevention (zoonoses and contingency plans);

- Consumer affairs and education;
- Administration and control of aquaculture;
- Coordination of domestic food control by the independent Municipal Environmental and Public Health Offices (Local Competent Authorities (LCAs))

Picture 2. MAST Organisation chart:



Director General

Responsible for MAST's operation and day to day management of the organization.

Chief Veterinary Officer

Responsible for the professional aspect of animal health, - welfare, zoonosis, medicinal resistance and matters concerning Veterinarians and Animal Nurses.

Director's Office

Responsible for news reports, editorship of MAST's website, communication with the media, national and international organizations, other stakeholders and is responsible for matters concerning human resources and the quality manual of the organization.

Coordination

Responsible for issues related to food safety, health and welfare of animals and plants. Responsible for education and instructions within and outside MAST and for control- and sampling plans. Is further responsible for processing of laboratory results and the outcome of controls. Is responsible for reactions to animal disease outbreaks and laboratory results etc. Responsible for specific controls, issuance of health certificates for consignments to countries outside the EEA, and follow up measures and administrative fines related to specific controls (eg. fish farming, fertilizer, import and export (not including export of horses) and feed processing plants).

Control

Responsible for the organization and execution of controls, issuance of permits, follow up of short – comings, enforcement measures and administrative fines related to serious short - comings (however, not in relation to inspections carried out by Coordination). Further responsible for reactions related to new and / or serious contagious animal diseases and

in accordance with contingency plans and other appropriate disease preventive measures and sampling in accordance with contingency plans.

Legal affairs

Responsible for the administration of legal affairs within MAST's scope and instructions regarding legal matters. Also responsible for communication with national and international organizations on legal matters.

IT (Information Technology) and Administration

Is responsible for the daily running of MAST, information technology and digitalization of operations. Additionally, the unit is responsible for the budget and inner control of the organization's finances.

In addition to the aforementioned units, there are four district offices affiliated to Control above. Department of aquaculture and the department of import and export are divisions of Coordination.

Directorate of Fisheries (DoF)

The Directorate of Fisheries is an agency of the Ministry of Food, Agriculture and Fisheries. The Directorate's task is to monitor fishing activities and to administer the fisheries management system in Iceland. This involves issuing of fishing permits, distribution of quotas and overseeing the daily operation of the individually transferable quota system. The Directorate collects data on all landed catch from landing sites in real time as well as information on processing and exports of fish products. The Directorate monitors the operation of fishing vessels, the weighing of landed catch and processing of fish both on site and through electronic surveillance such as through vessel monitoring systems which the Agency runs in cooperation with the Coast Guard of Iceland. The Directorate employs approximately 65 people. The Directorate works in close cooperation with the Marine Research Institute of Iceland, the Coast Guard and the Food and Veterinary Authority of Iceland, as well as other agencies serving the fisheries sector, both in Iceland and internationally.

The DoF is responsible for fisheries management in the Icelandic exclusive economic zone as well as Icelandic fisheries outside Icelandic jurisdiction. The Directorate also has administrative responsibilities and monitors fishing of salmonids in lakes and rivers and oversees whaling.

Ministry of the Environment, Energy and Climate (MoEEC)

Ministry for the Environment, Energy and Climate formulates and enforces government policy for environmental affairs, nature conservation, wildlife management, pollution and waste management, environmental monitoring and surveillance.

Environment Agency (UST)

The Environment Agency operates under the auspice of MoEEC and its organisation and structure are based on provisions of Act (IS) No 90/2002. UST has the role of promoting environmental protection and sustainable use of Iceland's natural resources, as well as public welfare, by ensuring a healthy environment, safe consumer goods and enhancing hygiene and safety in public facilities. UST is the competent authority for the implementation of the Water Framework Directive. UST has a wide-reaching administrative role, for instance concerning pollution issues (water, waste, air, soil), health and safety, nature and wild animal protection, wildlife conservation and management, monitoring of environmental quality, hunting management, biological diversity, the registration and marketing of pesticides and certification systems for professional users of pesticides as well as genetically modified organisms. The agency provides information and gives advice to the public, businesses and regulatory authorities. UST and MAST coordinate the work of LCAs as relevant.

Municipal Environmental and Public Health Offices (LCA)

Iceland is divided into 9 LCA districts, each comprising between one and fourteen municipalities. Each LCA district staff operates under the jurisdiction of a local public

health committee, comprising control district staff, five politically appointed members, one appointed by the local Nature preserve committees and one member representing the confederation of Icelandic Employers. Each LCA has control duties within its districts related to food safety, environmental protection and general hygiene. The organisation and structure of the LCAs is based on provisions of Act (IS) No 7/1998 on Hygiene and Pollution control. The district chief epidemiologist attends the meetings of the local public health committees as needed.

LCAs have a direct role regarding food safety and organic production, namely:

- Control of retail; and
- Control of primary production of non-animal origin
Control of production of foodstuffs of non-animal origin and composed foodstuffs.

Ministry of Health (MoH)

The Ministry of Health is responsible for administration and policy for health and health insurance issues in Iceland, as prescribed by law, regulations and directives, including:

- Public health;
- Patient rights;
- Operation of hospitals, health centres and other providers of health services;
- Promotion of information technology in the health services;
- Pharmaceutical affairs (including veterinary medicines);
- Health Insurances.

The Directorate of Health (DoH)

The Directorate of Health operates under the auspice of the MoH. The Chief Epidemiologist at the DoH is responsible for health security and general and public measures on communicable diseases and other threats to health. The Chief Epidemiologist is also the chairperson of the Joint Committee on Health Security and Communicable Disease Control (JC), a supervisory body appointed under the MoH.

The Icelandic Medicines Agency (IMA)

The Icelandic Medicines Agency operates under the auspice of the MoH. IMA's responsibilities are for example assessing quality and safety of medicinal products, inspections to confirm that relevant regulatory requirements are fulfilled and consumer protection.

Ministry of Higher Education, Science and Innovation (MoHESI)

The Ministry of Education, Science and Culture includes the Institute for Experimental Pathology of the University of Iceland which undertakes some analytical work in relation to official controls.

Ministry of Finance (MoF)

The Ministry of Finance oversees State finances. The Ministry provides advice to the government on its policy areas and provides services and information to the general public. Its responsibilities include customs issues (see Icelandic Revenue and Customs below) and international co-operation.

Icelandic Revenue and Customs

Icelandic Revenue and Customs is under the jurisdiction of the Minister of Finance. Its main role is to control import, transit and export and collect duties, taxes and other state revenues.

MAST cooperates with the Icelandic Revenue and Customs authority as regards export and import control including controls at BCPs and follow up of Rapid Alert System for Food and Feed (RASFF) notifications.

- **Table 1.** *The main relevant authorities with responsibility*

Central level		Website
MoFAF	Ministry of Food, Agriculture and Fisheries	www.stjornarradid.is/raduneyti/matvaelaraduneytid/
MoEEC	Ministry for the Environment, Energy and Climate	www.umhverfisraduneyti.is
MoH	Ministry of Health	www.velferdarraduneyti.is
MAST	Icelandic Food and Veterinary Authority	www.mast.is
UST	The Environment Agency	www.ust.is
DoH	Directorate of Health	www.landlaeknir.is
IMA	Icelandic Medicines Agency	www.lyfjastofnun.is
DoF	Directorate of Fisheries	www.fiskistofa.is
Municipal Environmental and Public Health Offices (LCAs)		
HKK	LCA for Gardabaer, Hafnarfjordur, Kopavogur, Mosfellsbaer and Seltjarnarnesarea	www.hef.is
HER	LCA for the City of Reykjavik	https://reykjavik.is/thjonusta/heilbrigdiseftirlit-reykjavikur
HVL	LCA for Vesturland area	https://hev.is/
HVF	LCA for Vestfjordur area	http://hevf.is/
HNV	LCA for Nordurland west area	www.hnv.is/
HNE	LCA for Nordurland east area	www.hne.is
HAUSTT	LCA for Austurland area	www.haust.is/
HSL	LCA for Sudurland area	swww.hsl.is
HSN	LCA for Sudurnes area	www.hes.is
IRC	Icelandic Revenue and Customs	www.tollur.is

Scientific support / Other institutions

Risk assessment committee for food, feed, fertilizer and seeds (Ministry of Industries and Innovation)

On the basis of the Food Act, 93/1995 and the Act on feed, fertilizer and seeds the MoFAF has established a committee to carry out independent risk assessments regarding foods, feed, fertilizer and seeds on request of MAST or MoFAF.

Veterinary Council

Under the Act on Veterinarians and Animal Health Service (IS) No 66/1998, the Veterinary Council deals with national issues such as import of live farm animals and reproductive materials. The Council can be requested by the Minister to discuss and evaluate the import of other live animals or animal products as well as other issues regarding animal health.

Joint Committee on Health Security and Communicable Disease Control (JC)

The JC is a supervisory body appointed by the MoH to ensure that relevant information is obtained, assessment is made, and appropriate measures taken to control and eliminate the spread of infectious diseases.

The Chief Epidemiologist of the DoH is chairperson of the JC. MAST has two representatives, a specialist on food safety and another on animal diseases. An environment specialist and a radiation specialist are also appointed to the Committee.

Matís ohf (Ministry of Industries and Innovation)

Matís ohf was established by Act (IS) No 68/2006 on the Icelandic Food Research Ltd. According to the Act, the laboratory has certain food safety obligations. Matís is the National Reference Laboratory (NRL) for many areas including *Salmonella*, pesticide residues and heavy metals.

Keldur - The Institute for Experimental Pathology of the University of Iceland (Ministry of Education)

The Institute for Experimental Pathology analyses official samples for food-borne pathogens and animal diseases (duties laid down in Act (IS) No 67/1990). The laboratory also has a department for fish diseases established by Act (IS) No 50/1986. According to the Act, the laboratory and CA are obliged to co-operate on measures to control/prevent fish diseases. Keldur is the NRL for *Campylobacter*, parasites (in particular *Trichinella*, *Echinococcus* and *Anisakis*), transmissible spongiform encephalopathies (TSEs), fish diseases, bivalve mollusc diseases and crustacean diseases.

Department of Immunology, the National University Hospital (Ministry of Health)

The laboratory is used by MAST and LCAs for the identification/confirmation of zoonotic agents such as *Salmonella* serotypes. Staff at this laboratory may also be consulted by the CAs regarding disease control and prevention, in both animals and humans.

Official laboratories

The CA designates laboratories who have accredited testing methods to carry out analysis of samples taken during official controls. Some samples are sent for analysis to laboratories in other Member States of the EEA when no laboratory in Iceland can perform the tests required.

A list of official laboratories can be found at [this link](#).

National Reference Laboratories (NRL)

The Ministry of Industries and Innovation has the responsibility to designate NRLs in Iceland. An overview of Nordic NRL's can be found on [this link](#) that also includes the NRL's that have been designated by MII in Iceland according to Article 100 in Regulation (EC) No 2017/625 (national regulation IS 234/2020):

National accreditation bodies

Iceland's accreditation body ISAC (Icelandic Board for Technical Accreditation) the single national accreditation body (NAB) of Iceland. ISAC is an independent division within the Icelandic Intellectual Property Office (ISIPO) (in Icelandic: Hugverkastofan) which is a governmental entity. ISAC assesses the competence of laboratories and certification bodies according to Act (IS) No 24/2006 on accreditation. The assessment is carried out by SWEDAC (Swedish Accreditation Body) on behalf of ISAC according to an agreement

between the two accreditation bodies. ISAC and SWEDAC are members of the European co-operation for Accreditation (EA). SWEDAC is also a signatory to the EA Multilateral Agreement for Laboratories (EA MLA) and a member of the International Co-operation for Laboratory Accreditation (ILAC).

Delegation of specific tasks related to official controls

There is a delegation of official controls within the meaning of Chapter III of Regulation (EC) No 2017/625, in the field of organic production. MAST has contracted Vottunarstofan Tún (TUN) for all control and certification of certified organic production in Iceland according to Article 40 in Regulation (EU) No. 2018/848.

1.2. Resources for performance of controls

Legal basis for controls

According to Article 30 of the Food Act (IS) No 93/1995, the CAs and their staff have full access to the premises and documentation of FBOs. The Foodstuffs Act also requires the FBOs to undergo inspections and assist the CAs in the process (Article 24 (1)).

Resources for performance of controls

MAST and the LCAs set the level of fees independently. Regulation (IS) No. 220/2018 deals with the funding of MAST through inspection fees which contribute to 30% of MAST operational costs. The remaining 70% is financed from the state budget. The fees are directly linked to inspection activity and the level of fees is based on actual cost for each activity.

The LCAs are financed through inspection fees collected from inspected bodies and direct funding from local municipalities. The level of fees is based on actual cost for each activity. The fees are published in the Icelandic Official Journal.

Staff qualification and training

MAST has developed a training programme for employees and staff, which undergo initial training, continuous and *ad-hoc* ongoing training. The training programme has been published as LBE-198 in the Quality Manual. All new staff at MAST receive the same initial training and those who carry out official controls receive additional specific training adapted to their individual needs. Training for other staff will also be defined. The training programme identifies responsibility of training, sets up basic programmes for different roles and describes the registration of training and storage of training related documents. All in-house training is registered in a system called Cloud Compliance Quality (CCQ) and each staff member can furthermore upload their continuous education in the system.

LCA inspectors all have a university degree in subjects relevant to their tasks. Furthermore, before being authorised by the Ministry of the Environment as public health inspectors they have to participate in a training course arranged by MAST and undertake practical training at a LCA district office.

Conflict of interest

Legal provisions are in place with regard to conflict of interest under various acts - Article 20 of the Government Employees Act (IS) No 70/1996 applies to MAST staff and Section II of the Administrative Act (IS) No 37/1993 applies to MAST and LCAs staff. Official veterinarians (OVs) are allowed, under some conditions, to carry out general veterinary services but DVOs work exclusively on official controls and may not provide general veterinary services.

MAST pays subsidies, provided by the annual budget, to private veterinary practitioners (PVPs) to carry out veterinary services in ten remote areas through formal agreements. These remote areas are defined in a regulation.

1.3. Organisation and implementation of official controls

Registration/approval of food business operators

According to Act (IS) No 93/1995 on Foodstuffs, all FBOs (for food of animal and non-animal origin) need approval following a visit, except for sheep and horse farms and vegetable growers, which need to be registered. Freezer and factory vessels are approved, although for freezer, factory and other fishing vessels with primary production only, a valid fishing permit is sufficient.

Standardized procedures for approval of establishments for food of animal origin and feed production are in place.

Official controls are carried out by the relevant CA (MAST or LCAs).

MAST and LCA organise its controls on a risk basis. Different systems are applied for different sectors although all systems are based on the same principles. Further description of the organisation of controls within each sector are described in Chapter 2.

Risk-based prioritisation of controls, performance evaluation and reporting of control activities

Food and feed

The control frequency of establishments producing food or feed is based on a risk classification system. In addition to the risk-based prioritisation of controls the evaluation of performance of FBOs during past controls affects their total control time or frequency of inspections. Based on their performance evaluation FBOs are categorized into performance categories. Each performance category has a performance index that affects the total control time of the FBOs. Further descriptions of the risk classification systems can be found on [this link](#).

Performance evaluation of FBOs is based on inspection manuals that are part of the work procedures for official controls of food and feed. Inspection manuals can be found on [this link](#).

Primary Production

A risk classification model has been implemented to evaluate the control frequency in each establishment in primary production (other than fishing vessels, fish farming, shell farming and vegetable growers). Performance evaluation will influence the risk-based control frequency. Further description of the system can be found on [this link](#). Inspection manuals can be found on [this link](#).

All the necessary information on primary producers have been transposed into IsLeyfur and are used as the database for official controls on primary producers. Several databases have been developed to keep records of live animals, their health status and their treatment with veterinary medicines.

Transparency and confidentiality

The MAST website provides easily accessible news coverage of topics pertaining to food safety and animal/plant health, publications and legislation. Part of the information is also available on the English version of the website.

Concerning data protection, Article 24 (2) of the Foodstuffs Act (IS) No 93/1995 states that staff of the CA may not disclose any professional information regarding FBOs. There are also restrictions on the right to information due to private interest in Article 5 of the Information Act (IS) No 50/1996. According to the General Penal Code No 19/1940 (article 136), a civil servant or former civil servant revealing work sensitive information may be subject to imprisonment.

Annual reports are published on MAST website, <https://www.mast.is/is/um-mast/utgefid-efni/skyrslur>.

1.4. Enforcement measures

Measures in case of non-compliance

The Food Act (IS) 93/1995 does include enforcement measures. MAST has developed detailed guidelines on how to follow up non-compliant cases.

Depending on the seriousness of a case, the inspectors may choose to use the following measures listed in article 30 in the Act on Food (IS) No 93/1995: issue safeguards or precaution; inform the general public of the nature of the risk to health; order decontamination of food; stop or limit the production and placing on the market of food, detain food and/or destroy it; shut down the activities of a food business; and withdraw the operating licence.

While MAST and LCAs do have legal powers to impose daily fines until the corrective action has been implemented and they have been used. The daily fines issued by the CAs are subject to Regulation (IS) No 767/2010, which stipulates the maximum fines per day of 500.000 ISK. The daily fines are subject to an administrative complaint to the MoFAF. Serious infringements may be reported to the police and eventually to the courts for possible measures under criminal law.

The CAs may also order tasks to be performed at the expense of the business responsible for executing the task. Such costs and daily fines may be collected without a prior judgment or settlement.

Sanctions

Sanctions, as described in Article 139 Regulation (EC) No 2017/625, may be imposed by the court. Article 31 of the Food Act (IS) No 93/1995 provides for a maximum imprisonment of 4 years in case of serious or repeated violations of law. There are no limits set out in law regarding the amounts of fines. Serious infringements may be reported to the police and eventually to the courts for possible measures under criminal law.

The legal basis for sanctions is the Act (IS) No 93/1995 on Food (see Article 31), Act (IS) No 22/1994 on Feed, Fertilizer and Seed and Act (IS) No 55/2013 on Animal Welfare.

Administrative fines are not authorized in the Food Act No 93/1995. They are, however, authorized in the Act on Animal Welfare No 55/2013 (Article 42), in the Act on inspection of Feed, Fertilizer and Seed No 22/1994 (Article 9g).

1.5. Verification and review of official controls

Verification procedures

MAST has several mechanisms in place to verify the effectiveness and appropriateness of official controls.

Senior officers and senior veterinary officers at the Division of Coordination are responsible for harmonisation of official controls, general harmonization between sectors and general implementation and training of new control procedures.

The official control time (number of hours) for all establishments producing food of animal origin and feed is estimated through the same risk classification system to ensure a harmonized evaluation of the risk across sectors, the appropriate allocation of resources for official controls across sectors and to ensure the effective implementation of official controls. The system also ensures that the official controls allocated to each FBO are based on transparent and sound criteria and that the FBOs' risk and performance is evaluated in the same manner, without regard to the sector they belong to or their geographical location. Both MAST and LCAs are responsible to implement, maintain, and review the system.

All control staff across sectors work according to the same general documented procedures which are established in MAST's Quality Manual. During harmonization efforts and inspections with control staff, the officers responsible check whether control staff are using the appropriate procedures, they help them to effectively implement these procedures in their work and they ensure that the procedures are followed in a consistent manner. Regular meetings are also held with control staff to ensure the appropriate implementation and effectiveness of the controls. MAST has established several teams in different fields of its controls and operation. Their purpose is, amongst others, to coordinate official control, practical training and review the control system regularly to ensure effectiveness.

Through the database IsLeyfur the progress and results of official controls can be monitored and extrapolated. Information is collected on for example the progress of official controls in all sectors, harmonization between inspectors, frequencies and types of non-compliances. Results are continually monitored, and they are also collected and compiled in a more systematic manner for review.

The LCAs shall report annually on the progress of their official controls of the previous year. Guidelines are in place for the harmonized reporting on official controls from the LCAs.

During seasonal slaughtering the veterinary officer of farm animal products responsible for regular official control meat processing and slaughterhouses visits all slaughterhouses to verify controls being done and assess the general conditions.

An evaluation of the effectiveness of official controls is also due to be examined through long term against strategic objectives and operational objectives in MANCP and objectives in regulations. Some indicators have been established to evaluate whether the long-term objectives are being achieved.

Audit system (internal or external audit)

An internal audit system has been developed and approved by the Ministry of Food, Agriculture and Fisheries (MoFAF). The system is based on the requirements of Commission Notice 2021/C 66/02 on audit guidelines and the ISO 19011:2018 standard. The Quality Manager of MAST is responsible for the internal audit process as the Audit body supervisor, under the authority of an audit committee and an audit steering committee. The internal audit teams consist of MAST senior officers who have received training as internal auditors at Better Training for Safer Food (BTSF) training on audit systems and internal auditing, some also attended a TAIEX seminar on internal audits of official controls and a BSI training course was held for auditors in Iceland in 2016. Furthermore, the Quality Manager (the audit body supervisor) is a certified ISO 9001:2015 Lead auditor. The audit team consists of 4 auditors.

The audit steering committee is responsible for the internal audit system and receives consultation and assistance from the audit committee. The audit committee approves the annual audit plans, evaluates the audit system and suggests changes based on their assessment to ensure an independent scrutiny of the audit process. The follow-up of audit results is the responsibility of the audit body supervisor who ensures that remedies are made when weaknesses are found in the control system.

A five-year plan (multi-annual national internal audit plan (MANIAP)) is issued and approved by the audit steering committee and covers responsibilities based on Regulation (EC) No 2017/625 and responsible authorities, i.e., MAST, LCAs, Laboratories and the Ministry of Food, Agriculture and Fisheries. An annual risk-based audit plan is also developed and approved by the audit committee, which is based on the multi-annual programme, as well as any recent developments, previous audit findings and identified risk areas. Each control area should be audited once every five years.

Iceland participates in a joint independent scrutiny system set up by the Nordic countries (Denmark, Sweden, Norway and Finland) and the audit system has undergone 2 independent scrutinies in the last 5 years.

Auditing of Vottunarstofan TÚN

MAST audits TÚN once a year to check if it performs controls in an objective and efficient ways. The audits include an annual document review and office audit.

1.6. Multi-annual national control plan (MANCP) and annual reports

MAST has published an implemented MANCP for 2023-2025. The development of the MANCP will be an on-going process and it will be revised and improved as needed.

MAST reports to SANTE Data Collection Platform as required in article 113 in regulation EB/2017/625 and regulation EB/2019/723.

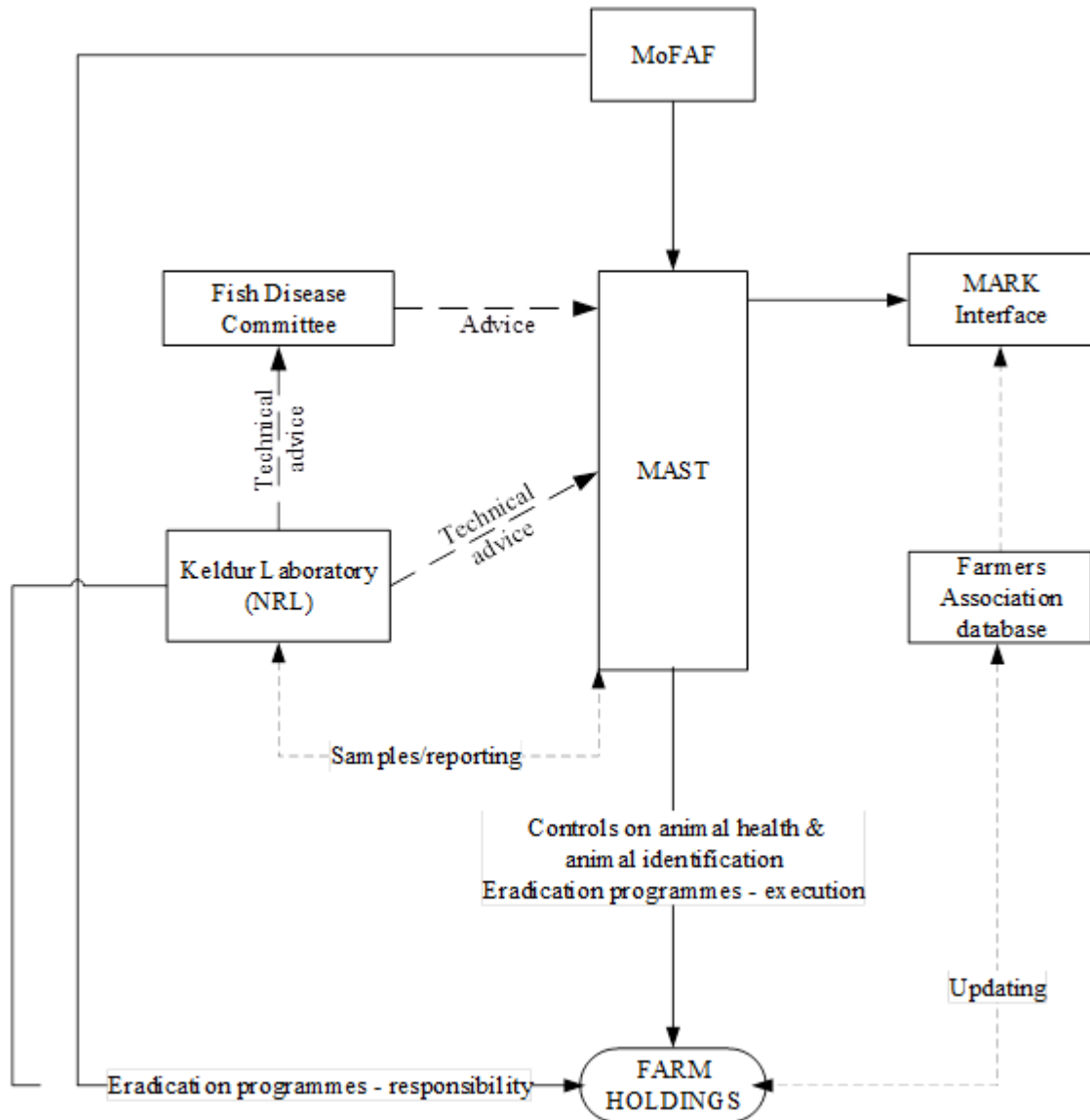
Each year MAST also publishes on its website mast.is an Annual Report which provides information on the work done in the previous year and results of controls.

Table 2. Overview of the distribution of responsibilities in relation to control systems and operational levels.					
Sector	Policy co-ordination	Co-ordination of controls	Implementation of controls	Laboratories	Risk assessment, scientific advice
1. Animal Health	MoFAF	MAST	MAST	The Institute for experimental pathology at Keldur	MAST and the Institute for experimental pathology at Keldur
2. Food of Animal Origin	MoFAF	MAST	MAST	Matís Laboratory The Institute for experimental pathology at Keldur Sýni ehf, Kópavogur, Syni ehf, Akureyri	Risk assessment committee for food, feed, fertilizer and seeds MAST and Matís Laboratory
3. Imports of animal and food of animal origin	MoFAF	MAST	MAST	Matís Laboratory The Institute for experimental pathology at Keldur	MAST
4. Feedingstuffs	MoFAF	MAST	MAST	Syni ehf, Kópavogur. LUFA	Risk assessment committee for food, feed, fertilizer and seeds, MAST
5. TSEs	MoFAF	MAST	MAST	The Institute for experimental pathology at Keldur, Matís Laboratory	MAST and the Institute for experimental pathology at Keldur
6. ABP	MoFAF MoEEC	MAST	MAST UST LCA	The Institute for experimental pathology at Keldur, Matís Laboratory	MAST and the Institute for experimental pathology at Keldur
7. Veterinary medicines - authorisation, marketing and distribution	MoH	MoH	Icelandic Medicines Agency		MAST and IMA
Veterinary medicines - residues	MoFAF	MAST	MAST	Livsmedelsverket Sweden, Eurofins Sweden, Födevarestyrelsen Danmark, LUFA Germany.,	

8. Foodstuffs and Food hygiene	MoFAF	MAST)	MAST LCA	Mátis Laboratory, The Institute for experimental pathology at Keldur Syni ehf, Kopavogur, Syni ehf, Akureyri	Risk assessment committee for food, feed, fertilizer and seeds, MAST
9. Imports of food of plant origin	MoFAF	MAST	MAST		MAST
10. Plant protection products - authorisation, marketing and use	MoEEC	UST	UST	N/A	MAST and UST
Plant protection products - residues	MoFAF	MAST	LCA	Mátis Laboratory	
11. Animal Welfare	MoFAF	MAST	MAST	N/A	MAST
12. Plant Health	MoFAF	MAST	MAST	N/A	MAST
13. Organic production	MoFAF	MAST	TUN MAST LCA	Mátis Laboratory	MAST

2 Organisation of responsibilities in relation to control systems

2.1 Control system for animal health



MAST	Icelandic Food and Veterinary Authority
MARK	Livestock database
MoFAF	Ministry of Food, Agriculture and Fisheries
NRL	National Reference Laboratory

The EEA legislation on veterinary matters applies to Iceland, except for the provisions concerning live animals, other than fish and aquaculture animals, and certain products. Council Directive 2006/88/EC on animal health requirements for aquaculture and its products and the prevention and control of certain diseases has been fully transposed.

Act (IS) No 25/1993 on animal diseases covers control of infectious major animal diseases including those for which EU legislation exists. Iceland prohibits import of live animals except of live fish, fish germplasm, crustaceans and molluscs. Iceland participates in the Animal Diseases Notification System (ADNS).

Iceland has transposed Directive No 2003/99/EC on the monitoring of zoonoses and zoonotic agents and Regulation (EC) No 2160/2003 on the control of salmonella and

other specified food-borne zoonotic agents. Iceland has in place a National control programme for both *Salmonella* and *Campylobacter* in poultry production with a zero tolerance for all *Salmonella* serovars. Meat from *Salmonella*-positive broilers is not allowed to be distributed and therefore, flocks are destroyed, and meat from *Campylobacter*-positive broilers must be frozen. Furthermore, Iceland has in place a National control programme for *Salmonella* in pigs.

Competent authorities and animal health controls

MAST, in conjunction with MoFAF, is responsible for surveillance, contingency plans, and preventive measures against animal diseases. The CA seeks to eradicate endemic disease, control the transmission of infectious agents and improve the general health and welfare of animals.

Inspections are typically carried out by DVOs or OVAs according to: Act (IS) No 25/1993 on Animal Diseases and Preventive Measures; Act (IS) No 66/1998 on Veterinarians and Animal Health Services; and Act (IS) No 38/2013 on Livestock Management (fish farming, cattle, pigs and poultry).

Holding registration, animal identification and movement controls

Iceland has transposed the EU legislation on identification and registration of cattle (Regulation (EC) No 1760/2000), pigs (Directive No 2008/71/EC) and sheep and goats (Regulation (EC) No 21/2004). EU rules for horses are not covered by the EEA Agreement.

Farm holdings are registered in a national interface (MARK), the operation of which MAST oversees. The Icelandic Agricultural Centre manages its daily operation as well as its further development.

Act (IS) No 38/2013 on livestock management and Regulation (IS) No 916/2012 on identification of livestock lay down the principles for animal identification and registration of their movement.

The identification system for animals is based on ear tagging. Records are maintained on farm registers and databases for domestic animals. Information in MARK is retrieved from databases used by the Farmers Association for breeding purposes. All stakeholders have access to information in MARK and keepers of livestock are required to keep their records updated. Livestock keepers are also responsible for recording diseases identified, medical treatments and preventive measures. When livestock is transported, a copy of their health-card must accompany them.

A livestock database - BUSTOFN - in operation since November 2010, is primarily for livestock owners (cattle, sheep, goats and horses) to enter information on the numbers of their livestock and other related information. This database will be connected to MARK and other livestock databases (HUPPA (bovine), FJARVIS (ovine) and FENGUR (horses)). BUSTOFN is accessible to all on MAST website. Personal information on livestock owners is restricted to designated persons.

Livestock keepers are responsible for keeping records of all animals in their herd in a herd-book. The herd-book and health-card records have to be retained for at least 10 years, even if production stops. If requested by the DVO, keepers must provide information on origin and destination of all animals in their ownership, animals produced and sold as live animals and slaughtered animals.

Identification mark and traceability

Control on the application of identification marks is included in MAST inspection tasks. Traceability control is also included in inspection procedures. Identification and registration rules per animal species are as follows:

Cattle

Bovine animals must be identified according to Regulation (IS) No 916/2012 and Regulation (IS) No 968/2011 incorporating Regulation (EC) No 1760/2000 on the identification of bovines with later amendments.

Sheep and goats

Ovine and caprine animals must be identified according to Regulation (IS) No 916/2012 and Regulation (IS) No 973/2011, incorporating Regulation (EC) No 21/2004 on the identification of ovines and caprines.

However, in the implementation regulation, farmers are only required to put identification tag in one ear of sheep and goats. When ovine or caprine animals are sold between herds, they have to be identified with two tags. Sheep may be moved within a region without a movement document (e.g., during the summer, animals may be moved to highland grazing and returned to their home farm in the autumn).

National programmes (surveillance, prevention and eradication of fish disease).

A Fish Disease Committee has been established to provide advice for the MoIFAF and for MAST regarding problems related to fish diseases. The chairman of the Committee is the CVO and other representatives are experts from the national laboratory at Keldur, the Institute of Fresh Water Fisheries, the Directorate of Fisheries and the Marine Research Institute. All fish farms have been included in the official national health control programme since 1985. The surveillance also includes farms producing wild salmon. Since 1993, EEA legislation on disease control measures has been followed, and since December 2008 with the implementation of Council Directive 2006/88/EC of 24 October 2006 on animal health requirements for aquaculture animals and products thereof, and on the prevention and control of certain diseases in aquatic animals (Regulation (IS) No 1254/2008). Canadian requirements have been respected since 2003. Surveillance is partly carried out by regular "on-site" health inspections, under the supervision of the veterinary officer for fish diseases, and partly via laboratory work at the official fish disease laboratory at Keldur in Reykjavík which has close co-operation with the EU Reference Laboratory (EURL) on virus diseases in Denmark. Surveillance takes place with a focus on: Viral Haemorrhagic Septicaemia (VHS); Infectious Haematopoietic Necrosis (IHN); Infectious Pancreatic Necrosis (IPN); Pancreas Disease (PD/SAV); Cardiomyopathy syndrome (CMS/PMCV); Infectious Salmon Anaemia (ISA) and Bacterial Kidney Disease (BKD) (notifiable diseases under Act (IS) No 25/1993). Only Bacterial Kidney Disease has been detected. The veterinary officer for fish also deals with mollusc and crustacean diseases.

All infectious diseases of concern in the aquaculture industry are of bacterial origin, mainly in the farming of Atlantic salmon (*Salmo salar*), Arctic char (*Salvelinus alpinus*) and Atlantic cod (*Gadus morhua*). The main bacterial diseases are: Atypical furunculosis (*Aeromonas salm. ssp. achromogenes*); Bacterial Kidney Disease (BKD - *Renibacterium salmoninarum*); Winter ulcers (*Moritella viscosa*); Enteric Redmouth (*Yersinia ruckeri*); Vibriosis (*Vibrio anguillarum*); and Cold water vibriosis (*Vibrio salmonicida*). All of these diseases except BKD, are effectively controlled by vaccines. Iceland has carried out an active eradication programme against BKD since 1985 including: a ban on transport and trade; sanitation/disinfection; fallowing and surveying period before the farm is permitted to recommence trade. Up to date no clinical notifiable viral fish disease has been detected in Iceland, but through the national monitoring program of both wild and farmed fish some fish viruses have been isolated. With viral screening of the Atlantic salmon stock some few samples have been found to be positive for the low/non-pathogen ISAV (HPR0). VHS virus was for the first time detected in lumpfish of wild origin in Iceland in October 2015 although this detection did not have a connection to the salmonid aquaculture farm sites. IPN virus has been detected, but still restricted in its distribution to

localized marine environment. Aquatic birnavirus was for the first time isolated from Atlantic halibut (*Hippoglossus hippoglossus*) in 1999, but in late 2019 an avirulent marine IPNV was for the first time detected in farmed Atlantic salmon in a sea-cage farm of the east coast of Iceland. There has never been evidence of IPN disease at freshwater sites and Iceland is regarded as being free from IPN.

Contingency plans

MAST has a generic contingency plan for foreign animal diseases, which is extended to specific disease situations. The contingency plan for animal health is published on MAST's website.

In the event of an outbreak of a serious contagious animal disease, MAST is the national disease control centre and its district offices act as the local disease control centres. Assistance is to be provided by Keldur laboratory (see below).

A memorandum of understanding on animal health emergencies has been signed by the competent authorities in the Nordic and Baltic countries. The aim is to provide support and assistance to the countries concerned affected by an animal disease outbreak when resources are not sufficient to meet the needs of the outbreak emergency. Simulation and other training exercises are performed on a regular basis.

In cases of food-borne diseases, infectious animal diseases of zoonotic nature, emergencies and crisis, MAST co-operates with the Chief Epidemiologist, who is responsible to the MoH. MAST co-operates with the LCAs and coordinates the work. In such cases, the Joint Committee on Health Security and Communicable Disease Control reviews the situation and decides whether a given situation should be considered an emergency or a crisis.

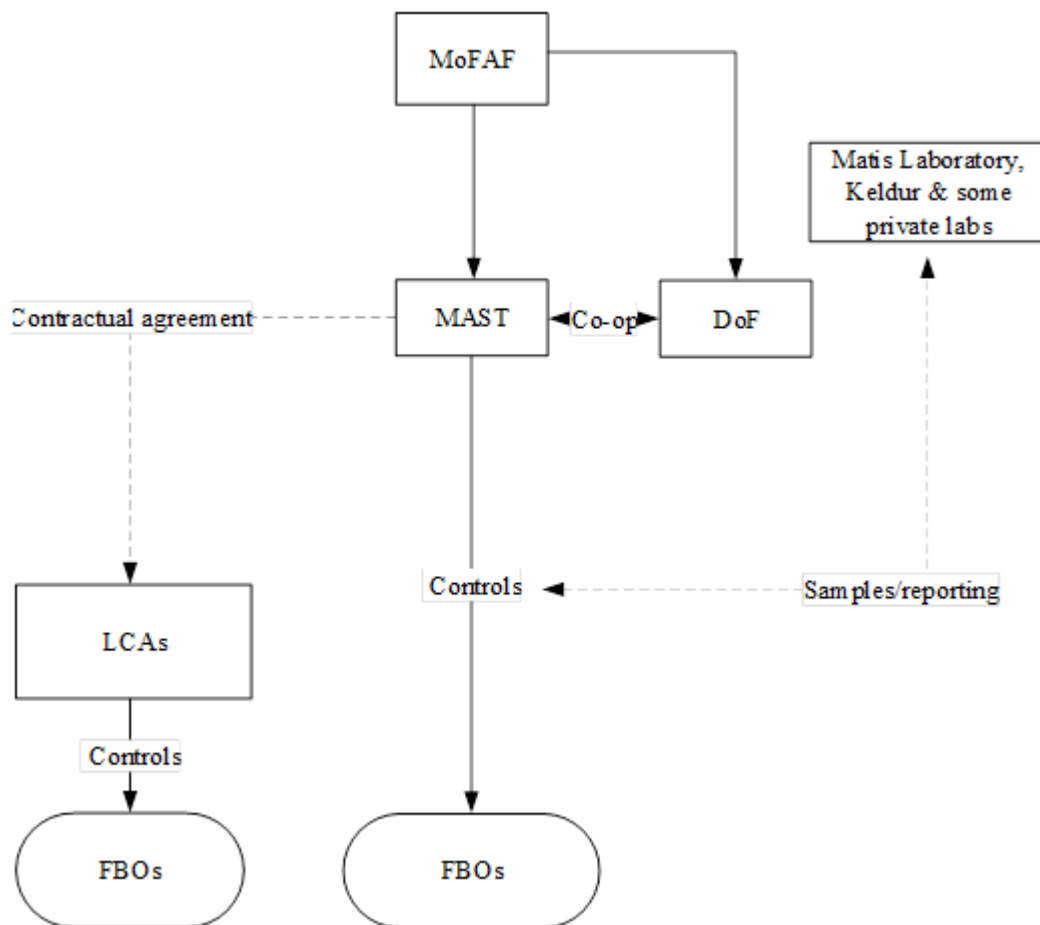
Laboratories

The Institute for experimental pathology at Keldur is responsible for diagnosis of diseases in animals. It has an advisory role for MAST regarding animal diseases (Act (IS) No 67/1990). A bio-safety level 3 laboratory facility was built following the Avian Influenza outbreaks in Europe. The institute has made agreements with the Danish National Veterinary Institute, Swedish National Veterinary Institute and the Veterinary Laboratory Agency in the UK, covering services urgently needed to confirm or rule out suspicion of an outbreak of an exotic or other animal virus disease.

The Keldur laboratory has an agreement with the Technical University of Denmark (DTU) to provide capacity, technical assistance and human resources in the case of a crisis. The diseases covered by the agreement of January 2003 are foot-and-mouth disease; swine vesicular disease; classical and African swine fever and virus enteritis in pigs; and other high risk infectious diseases of group A in animals, as far as the capacity of DTU permits. The diagnostic service covered by the agreement of October 2004 is to confirm or rule out suspicion of an outbreak of the exotic fish virus diseases: Infectious Salmon Anemia; Infectious Haematopoietic Necrosis; Viral Haemorrhagic Septicaemia; Salmonid Alpha Virus and Infectious Pancreatic Necrosis.

Viral analyses are also carried out at the Food, Veterinary and Environment Agency of the Department of Fish and Animal Diseases in Faroe Islands and PatoGen Analyse in Norway.

2.2. Control system for food of animal origin



DoF	Directorate of Fisheries
FBO	Food Business Operator
LCAs	Municipal Environmental and Public Health Offices
MAST	Icelandic Food and Veterinary Authority
MoFAF	Ministry of Food, Agriculture and Fisheries

Competent authorities

MAST is responsible for food safety controls covering primary production, official control in slaughterhouses, cutting plants, meat plants, dairy plants, egg packaging centres, egg processing plants, fish processing plants and vessels and control of live bivalve molluscs, as well as control of food import and export.

MAST has a contract with the Directorate of Fisheries. According to the contract the DoF should carry out surveillance on the hygiene of fishing boats and handling of fish at landing sites and notify MAST if DoF recognise serious findings. During summer DoF measure the temperature of fish at landing and sends the reports to MAST.

MAST supervises the work of the LCAs who are by law responsible for controls of the retail market, including meat and fish processing in retail outlets, food businesses producing food of non-animal origin and food businesses producing composed food (processed food of animal origin and of plant origin).

MAST can also assign some of its tasks to LCAs by a formal contract. The tasks that can be contracted out include the approval of the FBOs, the official controls and the collection of control fees.

Registration and approval of establishments and vessels

According to Act (IS) No 93/1995 on Foodstuffs, primary producers of food of animal origin must be approved following an application and official control visit, except for premises for sheep production and horse farms, which should only be registered. All food producing and processing establishments (including freezer vessels and factory vessels) must be approved by MAST and other fishing vessels only need to be registered.

Applications for producing food of animal origin, as the main production, are accounted for, by the district offices. The district offices are responsible for the approval audits, issuing approval and official control of approved establishments.

Standardised procedures for approval of establishments are established in the [Quality Manual of MAST](#). A list of approved establishments producing food of animal origin, is available on [MAST website](#).

Fish farms

Under Act (IS) No 71/2008 on Aquaculture, the responsibility for approving fish farming facilities lies with MAST. Fish farms require two operating licenses to operate, one from MAST and one from the Environment Agency of Iceland. The first operating license is required from MAST which addresses factors related to the fish farming operation such as buildings and equipment while the second operating license is required from the Environment Agency of Iceland, according to Act (IS) No 7/1998 and Regulation (IS) No 550/2018, which addresses environmental factors related to fish farming.

Official controls of fish farms follow a risk-based approach which takes into account the nature of the fish farm, size and what species are farmed. An inspection manual was issued in 2019 to further harmonize official controls.

Shellfish growers (Bivalve molluscs)

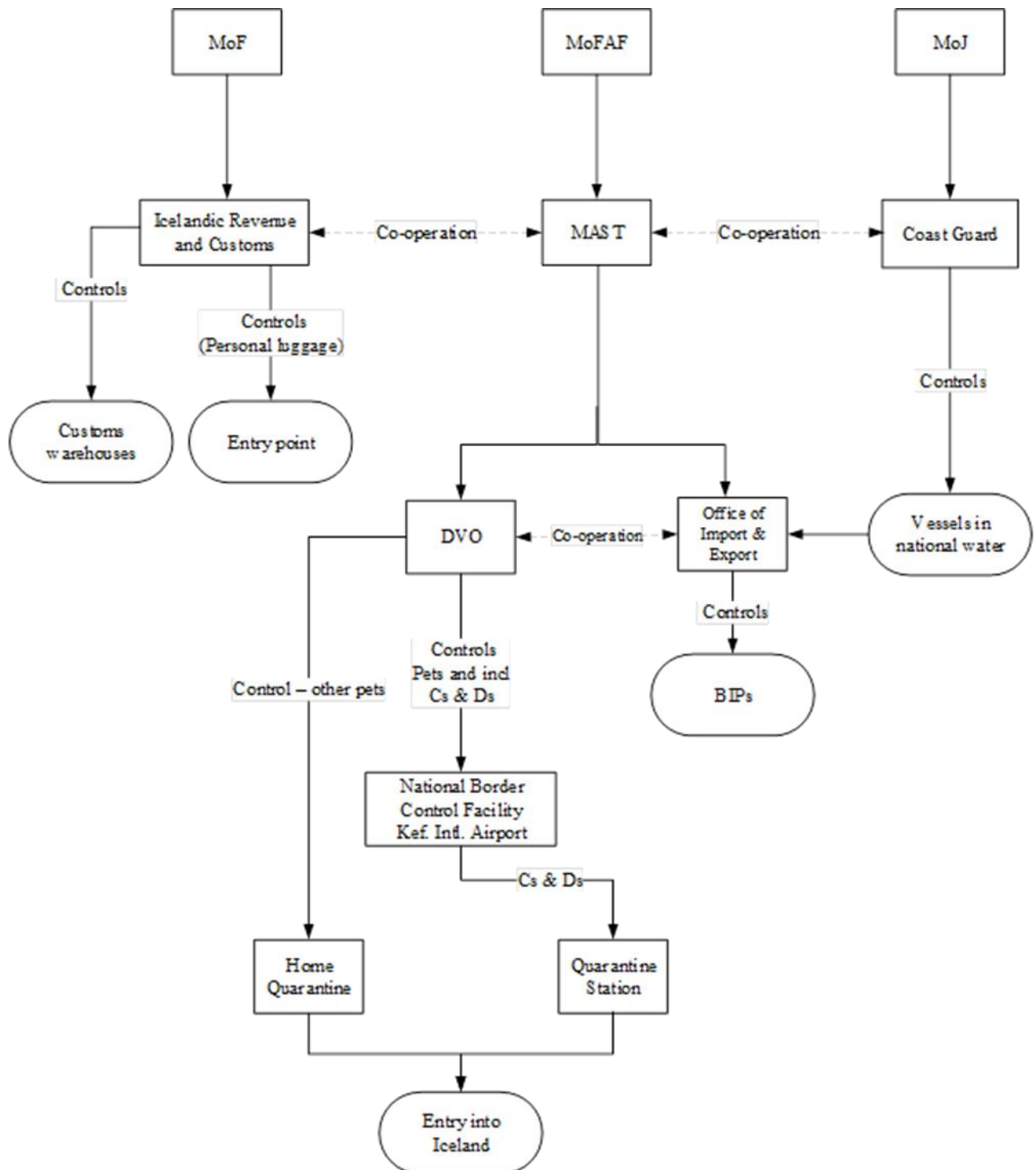
MAST is responsible for the licensing and registration of shellfish (Live Bivalve Molluscs - LBM) growers according to Act (IS) No 90/2011 on culturing of shellfish.

MAST is also the CA for classification of harvesting areas, monitoring of toxic algae and marine biotoxins in cooperation with the producers and approval of dispatch centres according to Regulation (EC) No 853/2004, 2017/625 and 2019/627.

Organization and implementation of official controls

See description of risk-based prioritization and performance evaluation systems in chapter 1.3.

2.3. Control system for imports of animals, germinal products and food of animal origin



- BCP** Border Control Post
- DVO** District Veterinary Officer
- MAST** Icelandic Food and Veterinary Authority
- MoF** Ministry of Finance
- MoFAF** Ministry of Food, Agriculture and Fisheries
- MoI** Ministry of the Interior

The EEA legislation on imports of products of animal origin from third countries applies to Iceland, however Iceland is exempt from Annex I of the EEA Agreement concerning trade in live animals other than fish and aquaculture animals. This exemption also applies to germplasm such as ova, embryos and semen.

The Importation of Animals Act No 54/1990 covers provisions on control of imports of live animals. In general, all imports of animals and germplasms is prohibited. However, the Icelandic Food and Veterinary Authority may derogate from the general ban provided that the instructions entailed in the Act and Regulations issued on its basis are strictly observed. Specific regulations apply to imports of the following: pets (Regulation NO 200/2020), porcine semen (Regulation No. 859/2002), bovine semen/embryos (Regulation No. 850/2015). In the case of importation of species that are alien to Iceland, an import permit from The Environment Agency (UST) is required.

Importation of raw meat and raw eggs from third countries is subject to an import permit from MAST in accordance with Act on Animal Diseases (No. 25/1993).

Veterinary checks are in line with Regulation (EU) 2017/625 on official controls and other official activities performed to ensure the application of food and feed law, rules on animal health and welfare, plant health and plant protection products.

The deadline for completion of the rejection procedure for non-compliant consignments is limited to 60 days.

Table 3. BCPs in Iceland

Name of the BCP	Type	Approval EFTA Surveillance Authority Decision
Hafnarfjörður	Port	POA-HC(2)(3), POA-NHC-NT(1)(2)
Keflavík	Airport	POA-HC(2), POA-NHC(2), LA-O(15)
Reykjavík (Eimskip)	Port	POA-HC(2), POA-NHC(2), PNAO-HC(2)
Reykjavík (Samskip)	Port	POA-HC(2), POA-NHC(2), PNAO-HC(2)
Þorlákshöfn	Port	POA-HC-T(FR)(2)(3), POA-HC-NT(1), POA-NHC-NT(1)

Competent authorities

MAST's Office for Import and Export is responsible for control of animal products and live aquaculture animals at the Border Control Posts (BCPs). National border control facilities are operated by MAST at Keflavik International Airport for the control of importation of pet animals (cats and dogs). Iceland Revenue and Icelandic Revenue and Customs is responsible for checks of personal luggage for travellers. The Coast Guard is responsible for monitoring vessels in national waters. MAST is in cooperation with Iceland Revenue and Icelandic Revenue and Customs as regards filtering out consignments for inspection by MAST.

Monthly information meetings are held between MAST and the Icelandic Revenue and Customs to review working methods, ensure coordination and transparency.

Import controls

Import controls of products of animal origin and live aquaculture animals from third countries is in accordance with EU legislation. For imports of food of animal origin, pre-notifications are received through the TRACES system. MAST has access or receives cargo manifests from freight companies for crosscheck purposes.

Consignments that are not notified through TRACES but require MAST approval are identified in the customs computer system (using the CN codes). Upon notification through the MAST service portal, the necessary checks are performed. For cross check purposes, MAST receives lists of consignments of food of animal origin from Iceland Revenue and Customs and then filters information according to the origin of the consignments: EEA or third countries.

MAST regularly organises seminars for Iceland Revenue and Customs on import controls and on the different procedures for release of a consignment from BCPs, either for free circulation, for channelling, re-import or for transit.

Veterinary checks on food of animal origin

The main legislation governing importation of products of animal origin is Act (IS) No 93/1995 on foods Act (IS) No 22/1994 on control of Feed, Fertilisers and Seed, Act (IS) No 25/1993 on Animal Diseases and their Prevention; Regulation (IS) No 637/2021 on import of aquaculture animals (entry into force of Regulation (EC) No 2020/2236), Regulation (IS) No 1044/2011 on veterinary checks on imports of products of animal origin from third countries and Regulation (IS) No 234/2020 (entry into force of Regulation (EU) 2017/625).

The frequency of veterinary checks on products of animal origin is determined according to Regulation (IS) No 1044/2011 that is in line with Implementing Regulation (EU) 2019/2129.

The frequency of laboratory tests on consignments is in accordance with a monitoring plan. The plan is based on the nature of the products and the risk they present, taking into account all relevant monitoring parameters, such as: frequency; number of incoming consignments and results of previous monitoring. The monitoring plan is revised annually.

Following satisfactory documentary, identity and physical checks, a Common Health Entry Document (CHED) is issued. The importer subsequently takes the clearance import documents to customs for release of their goods.

Rejections

In the case of discrepancies detected or where requirements for importation in accordance with Regulation (IS) No 1044/2011 and 234/2020 (Regulation (EU) 2017/625) are not met, the consignment is rejected. In case of rejection, an announcement of a pending decision of rejection is sent to the importer. The importer has the right to object. Thereafter a decision of rejection is sent to the importer, who subsequently has the right to appeal to the MoFAF.

Fish – direct landing

For direct landings of frozen fish products from third country vessels, pre-notifications are received through the TRACES system. In the case of freezer vessel from a third country, a captain's declaration is required, while a health certificate is required from a factory vessel.

Personal imports

Travellers may bring products of animal origin from countries within the EEA, Andorra, Liechtenstein, San Marino and Switzerland, and certain products from other countries

(Article 2 in national Regulation (IS) No 1251/2019, in line with Regulation (EU) 2019/2122).

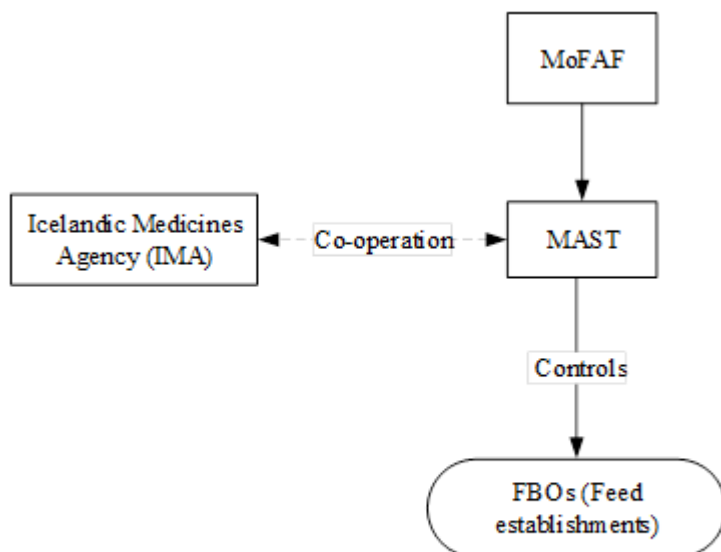
Transit / transhipments of consignments

The freight companies notify transhipments of products of animal origin to MAST. Time limits for such consignments are followed up and documented by MAST. Transhipments take place at Reykjavík Eimskip and Keflavik airport.

Customs warehouses and ship suppliers

Neither approved customs warehouses nor ship chandlers exist in Iceland.

2.4. Control system for feeding stuffs and animal nutrition



IMA	Icelandic Medicines Agency
MAST	Icelandic Food and Veterinary Authority
MoFAF	Ministry of Food, Agriculture and Fisheries
FBO	Feed Business Operator

Competent Authorities

MAST is the CA responsible for official controls on feed. MAST may assign some tasks to LCAs. Informal co-operation is also in place with the Icelandic Medicines Agency regarding the definition of "feed" and "medicine" where there may be an overlap and with the Customs Authorities regarding imports.

Inspections are carried out by MAST according to Act (IS) No 22/1994 on control of feed, fertilisers and seeds and Regulation (EC) No 2017/625 on official controls to verify compliance to Regulations (EC) No 1831/2003 on feed hygiene, (EC) No 1069/2009 on animal by-products, (EC) No 767/2009 on placing on the market and use of feed, (EC) No 1831/2003 on additives for use in animal nutrition and (EC) No 159/2009 laying down the methods of sampling and analysis for the official control of feed, Directive (EC) No 32/2002 on undesirable substances in animal feed.

MAST official controls are focused on verification of internal quality management systems and sampling for FBOs in the higher risk groups. Control of the lower risk groups is primarily based on registration, documentation and import control.

The surveillance of primary producers at farm level is part of the regular surveillance system for animal welfare and production on farms.

Medicated feed controls

Iceland has implemented Council Directive 90/167/EEC laying down the conditions governing the preparation, placing on the market and use of medicated feeding stuffs in the Community. The directive was implemented through two national Regulations (IS) No 608/2013 for production and placing on the market and use of medicated feeding stuffs for fish, crustaceans and molluscs and (IS) No 607/2013 for production and placing on

the market of medicated feeding stuffs for animals. These Regulations will be repealed with the implementation of Regulation (EC) No 4/2019.

The surveillance of medicated feeding stuffs is under the supervision of the Icelandic Medicines Agency. The medicines shall be mixed in pre-mixtures before they are mixed into the feed that is combined with normal feed. The preparation of the medicated feeding stuffs shall only be done by specially authorised feed operators.

Enforcement

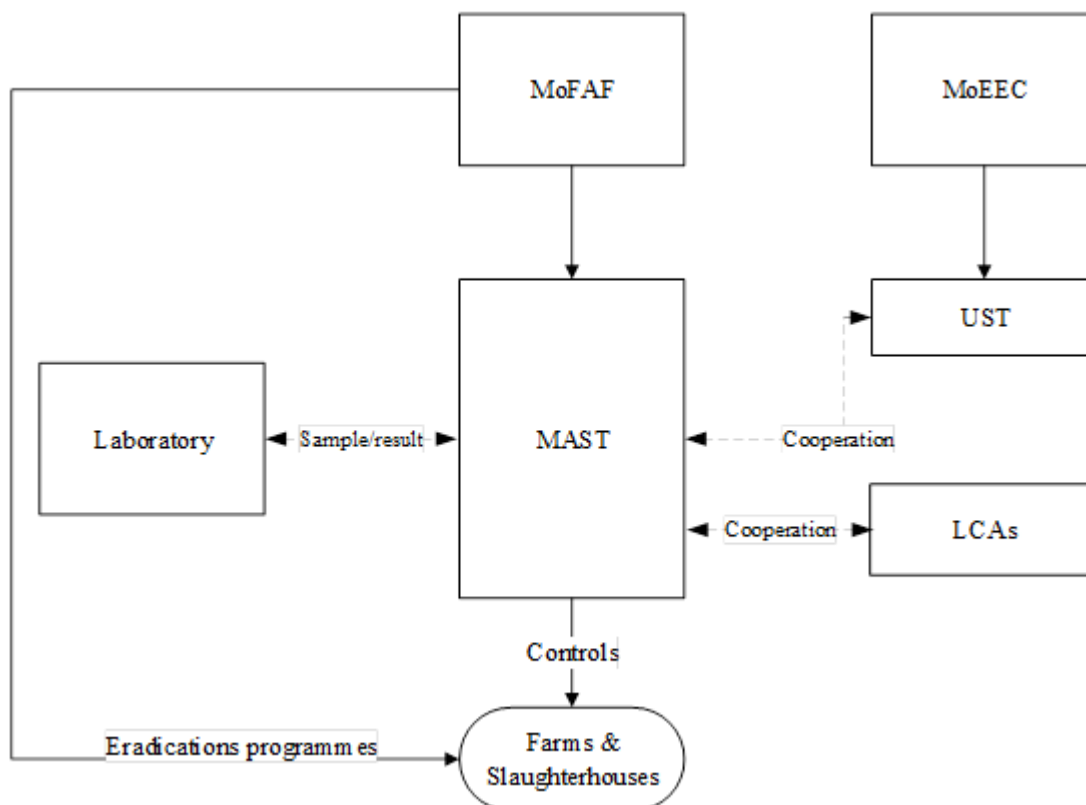
The legal basis for sanctions in cases of infringement is contained in Act (IS) No 22/1994 on control of feed, fertilisers and seeds. Documented procedures are in place in MAST Quality Manual on actions taken in cases of infringements.

Laboratories

MAST cooperates with two laboratories for analysis of feed:

- LUFA *Nord-West Institut für Futtermittel* in Germany can undertake a range of analysis, in their own laboratories or contract laboratories. It is accredited by *Deutscher Akkreditierungs Rat* (DAR). The scope of accreditation covers all methods used, except for fluorine analysis for which method - CEN/TC 327 N620 (*Entwurf*) is used.
- Syni ehf, Kopavogur, is used for analysis of *Salmonella*. It is accredited for analysis of most common substances and microorganisms in accordance with the IST EN ISO/IEC 17025 standard. The laboratory analyses *Salmonella* with the following methods: NMKL Nr. 71, 5. edition 1999 and Vidas *Salmonella* 30702.

2.5. Control system for Transmissible Spongiform Encephalopathy (TSE)



LCAs Municipal Environmental and Public Health Offices

MAST Icelandic Food and Veterinary Authority

MoEEC Ministry of Environment, Energy and Climate

MoFAF Ministry of Food, Agriculture and Fisheries

UST Environment Agency of Iceland

Competent authorities

MAST is the CA for all issues concerning TSE, including import controls, animal health controls, surveillance, monitoring and slaughterhouse controls based on EEA legislation. The Environment Agency (UST) is the CA for issues concerning disposal of contagious animal waste. UST co-operates with MAST which has an overall responsibility for the prevention of spread of animal diseases. In case of TSE the LCAs shall in co-operation with UST and MAST recommend how and where a contagious waste will be disposed of and how the transport of waste shall be carried out. The LCAs will also control that the process of disposal and cleaning of equipment and vehicles, are in line with the recommendation.

Regulation (EC) No 999/2001 on TSE was incorporated in Regulation (IS) No 41/2012.

Epidemiology-surveillance

BSE has never been detected in Iceland. Since 2000 screenings have been carried out annually. Samples are taken at slaughterhouses or farms from the following subpopulations:

- All bovine animals displaying behavioural or clinical signs consistent with BSE, which MAST receives notification about.

- Bovine animals older than 48 months that have died or been culled at the farms due to accidents or health reasons, which MAST receives notification about.
- Bovine animals older than 48 months sent for emergency slaughter.
- All bovine animals identified as disease suspect at ante mortem inspection.
- Bovine animals older than 48 months which are rejected for human consumption based on ante mortem inspection or due to significant deficiencies due to lack of traceability or ear tags.

In 2004 Iceland was recognised as a negligible BSE risk country, by the OIE World Assembly of Delegates and reconfirmed every year to date. According to the EEA JCD of October 2007, an agreement was made for Iceland to implement Regulation (EC) No 999/2001 with derogation from the requirements to breed for genetic resistance (Iceland has an eradication policy – see below). According to the agreement, only lambs that are free of the VRQ gene may be used for repopulation on farms where scrapie has been detected.

Scrapie has been endemic in the country since 1878. A decision was made in 1986 to start an eradication programme. Areas where scrapie has been detected are kept under special surveillance for 20 years. Samples are taken annually from about 4000-6000 sheep at slaughterhouses and sheep at farms displaying clinical signs compatible with scrapie. The farmer is fully compensated for his loss for at least the two years that the farm must remain depopulated of sheep. Disinfection procedures carried out on the farm involve removal of all interior wooden material, hay and sheep manure from the sheep houses and their safe disposal. This is followed by disinfection.

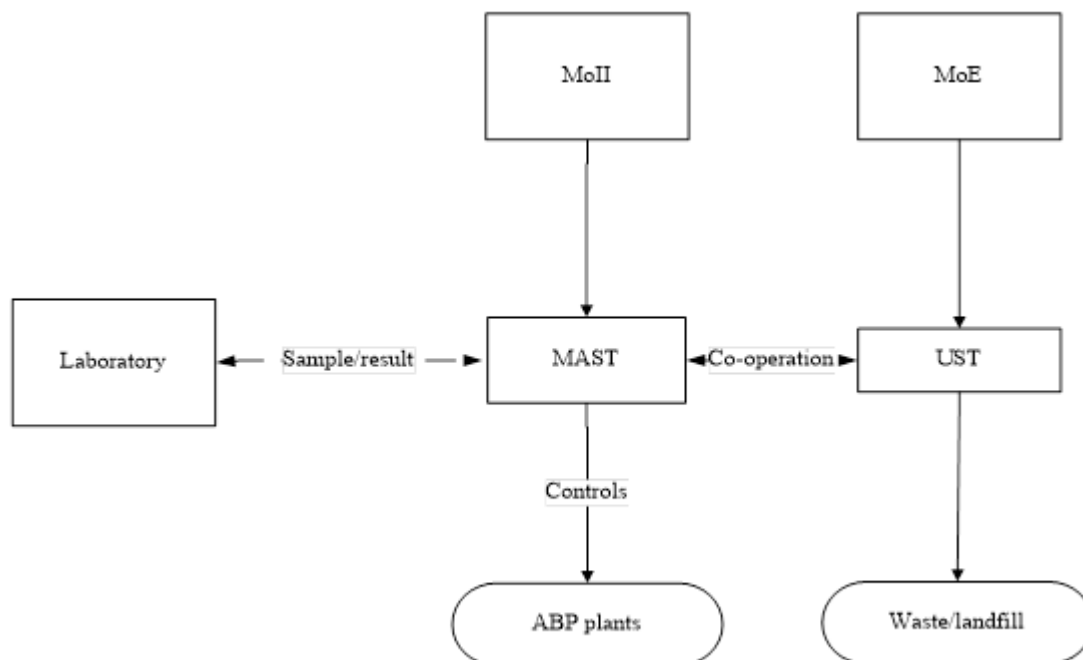
Total Feed Ban

Since 1968, it has been prohibited to import meat and bone meal and greaves for use in feeding stuffs for livestock (except pet food). The current legal reference regarding import ban of all meat and bone meal (MBM) is article 10 of Act (IS) No 25/1993. There has been a ban on feeding MBM to ruminants since 1978 and all food-producing animals since 2001. Fishmeal is readily available and is used as a protein source for food-producing animals instead of MBM. Almost all compound feed for livestock is produced domestically. The main importation is of additives, premixes and pure feed ingredients. There have been no registered imports of compound feedstuffs since 1968.

Laboratories

Keldur is the NRL for TSEs and is responsible for analysing samples taken by MAST officers in the field or in slaughterhouses. Keldur uses the Biorad system for routine analysis. All suspicious samples are also tested using Western Blot and Immuno-Histochemical methods. Some samples are sent to the EU reference laboratory for TSEs – Veterinary Laboratories Agency (VLA) in Weybridge in the UK for confirmation.

2.6. Control system for Animal By-Products (ABP)



MAST	Icelandic Food and Veterinary Authority
MoEEC	Ministry of the Environment, Energy and Climate
MoFAF	Ministry of Food, Agriculture and Fisheries
UST	Environment Agency of Iceland

Competent Authorities

MAST is the CA for animal by-products. UST is the CA for burial and burning of waste and co-operates with MAST on the issue. Regulation (EU) No 1069/2009 and 142/2011 were implemented with regulation (IS) No 674/2017. Iceland may decide to use a derogation for remote areas (material when at the time of the disposal the Specific Risk Material (SRM) has not been removed (category 1 material), category 2 material and category 3 material may be disposed as waste by burning or burial on site). The definition of remote areas has been established with regulation (IS) No 992/2019 amending regulation (IS) 674/2017.

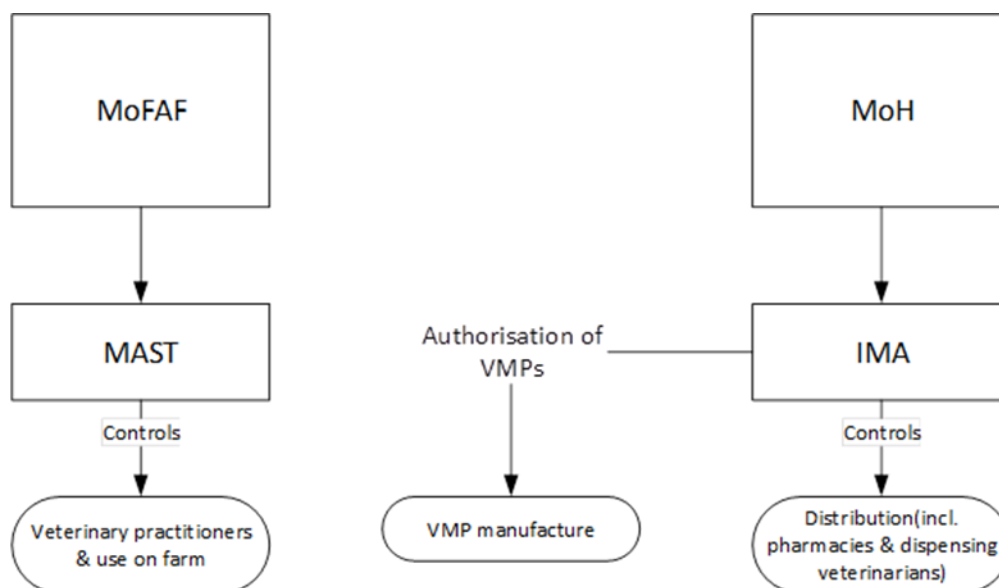
MAST issues approval for fish meal plants, MBM plants, feed plants using ABP, pet food plants, technical plants and plants manufacturing organic fertilizer and soil improvers on the basis of an inspection of the premises and own-check system. An updated list of registered and approved ABP establishments exists and is published on MAST [website](#).

MAST is responsible for the official controls of fish meal plants, MBM plants, feed plants using ABP, pet food plants, technical plants and plants manufacturing organic fertilizer and soil improvers. Home slaughter is permitted in Iceland. All waste shall be delivered to a facility holding a valid permit to handle waste according to Article 10 of the Waste Act (IS) No 55/2003. However, there is not a complete system for collection of home slaughter waste and fallen stock (with exceptions in populated areas). MAST has issued a form for commercial documents of ABPs.

Iceland has limited incineration capacity for carcasses potentially infected with TSE. Catering waste is currently disposed in landfill or subject to composting.

2.7. Control system for veterinary medicinal products (VMP) and residues

Veterinary Medicinal Products (VMP)



IMA	Icelandic Medicines Agency
MAST	Icelandic Food and Veterinary Authority
MoH	Ministry of Health
MoFAF	Ministry of Food, Agriculture and Fisheries
VMP	Veterinary Medicinal Products

Competent Authorities

The Minister of Health is responsible for the implementation of legislation on VMPs.

Controls on the production, distribution and use of VMPs are divided between the Icelandic Medicines Agency (IMA) and MAST. IMA is responsible for licensing of, and official controls on, manufacture and distribution of VMP to pharmacy level, while MAST is responsible for the control of VMP use by veterinary practitioners and on farms.

Authorisation of VMP

In accordance with the Medicinal Products Act, the IMA, an independent regulatory authority under the auspices of the MoHH, issues marketing authorisations for medicines. In most cases this is done in collaboration with regulatory authorities in the EEA.

- PVPs can make a request to a VMP wholesaler to import EU approved VMPs. This import needs to be pre-approved by IMA which seeks a statement from MAST when needed.

Prohibited substances

Regulation (IS) No 539/2000 on the authorisation of veterinarians to prescribe medicine establishes the provisions for prohibition of the use of certain substances. The legal basis for the Regulation is Act (IS) No 100/2020 on Medicinal Products. Chapter II of the Regulation contains a list of substances prohibited for use as animal treatments.

Official controls on marketing/use of VMPs

- The IMA is responsible for the control of manufacturing and distribution of VMPs according to Article 6 of Act (IS) No 100/2020. MAST supervises veterinary practitioners and controls the use of VMPs according to Article 45 of Act (IS) No 100/2020.

Control of VMPs at wholesale and retail level

According to IMA procedures, all wholesalers are inspected at least once every five years. There is a checklist for use during inspections of wholesalers which includes checks of the VMPs and purchases by PVPs.

VMPs are distributed mainly *via* practicing veterinarians who purchase VMPs from the wholesalers for use in their own practice and operate veterinary pharmacies selling VMPs to animal owners. Small quantities of VMPs are also distributed through other pharmacies. Retailers are required to be inspected based on risk once every four to ten years. Checklists are used during inspection of retailers and veterinary practitioners operating veterinary pharmacies.

Feed mills

Production and distribution of medicated feed is permitted in Iceland. IMA is responsible for control and authorisation of manufacturers and distributors of medicated feed.

Private veterinary practitioners (PVPs) and farms

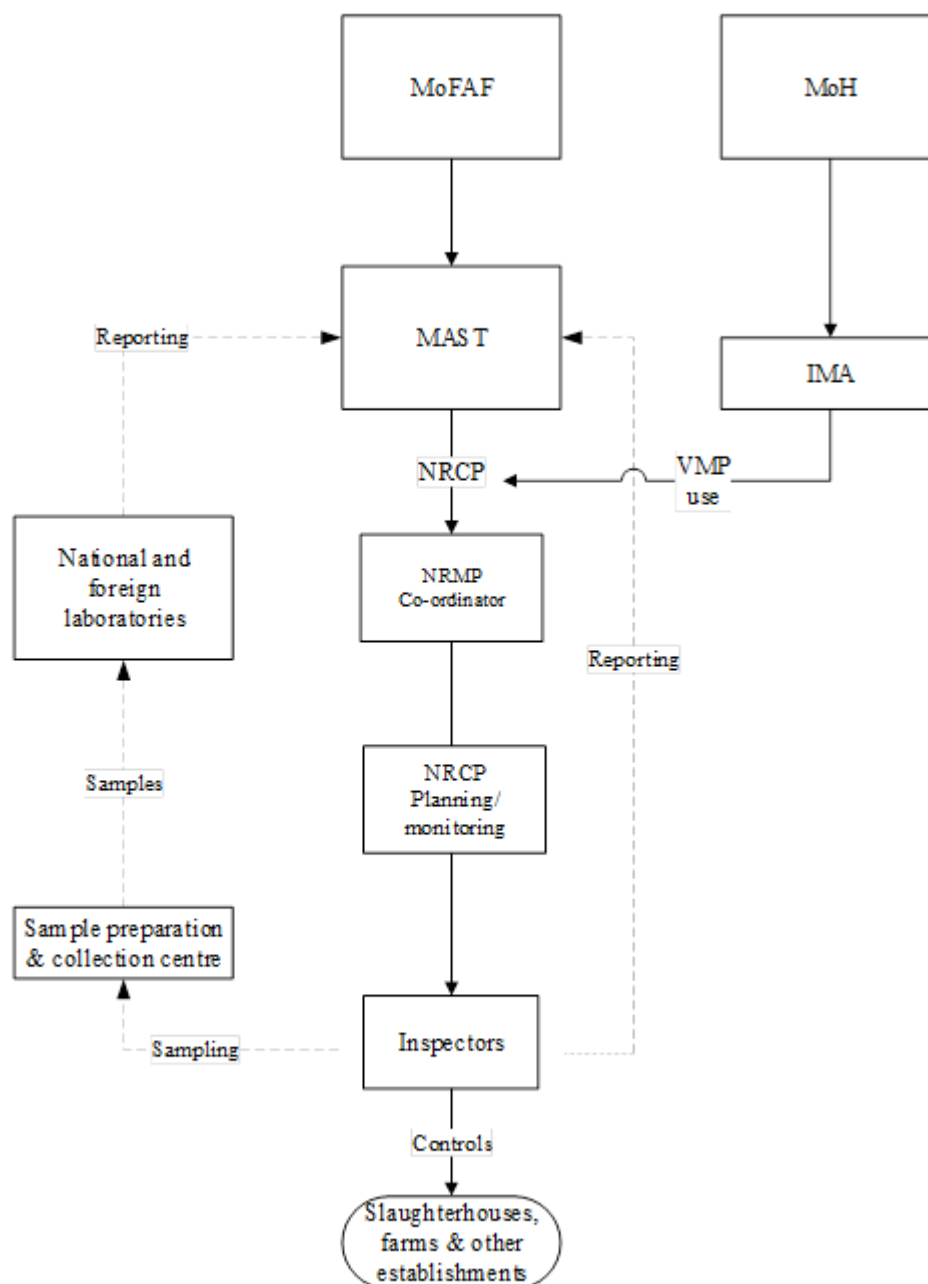
MAST is responsible for official controls on the proper use and storage of medicines on farms. Animal keepers are obliged to keep records on the health status of the animals and their medical treatment in a herd book for at least ten years.

- Sheep farmers in remote areas may store/administer antibiotic medicines under specified conditions if the farmer has a contract with a PVP for the supply of the drugs and the PVP has permission from the CVO.
- MAST is also responsible for the controls on the use of VMPs by PVPs. [HEILSA](#) is an internet-based computer system that MAST launched in the beginning of June 2011 and has been updated in 2022. PVPs are obliged to register the use of medicines to horses and cattle and have an option to register for sheep as well. The system contains information on animal health and veterinary treatment in animals. Registration and usage of the system is stated in [Regulation \(IS\) No 303/2012](#).

Links to other systems

HEILSA is linked to the electronic herd books for sheep, cattle and horse farmers (Fjárvis, Huppa and WorldFengur) so the registrations are visible to the farmers. Abattoirs get an email from HEILSA every day with information about which animals are in a slaughter ban.

Residues



IMA	Icelandic Medicines Agency
MAST	Icelandic Food and Veterinary Authority
MoFAF	Ministry of Food, Agriculture and Fisheries
MoH	Ministry of Health
NRCP	National Residue Control Plan
VMP	Veterinary Medicinal Products

Competent authorities

MAST is responsible for monitoring residues in live animals and animal products. The IMA has an input into the NRCP based on their data on VMP sale.

Official controls on residues

Implementation of the National Residue Control Plan (NRCP)

The NRCPs are drawn up according to EC regulations no 1644/2022, 1646/2022, 931/2022, 932/2022 and 601/2021 and Icelandic regulation no 234/2020. The number of samples to be collected each year is based on annual national production from the previous year. The NRCPs are submitted annually to the Authority and the results of the NRCP are submitted annually to EFSA. MAST is responsible for supervision of the NRCPs. The NRCPs are reviewed and evaluated annually, when the level of risk for residues in certain areas and animals is considered and the distribution of samples throughout the year is determined, according to registrations in HEILSA, among other things.

Other residue control programmes including pre-export testing

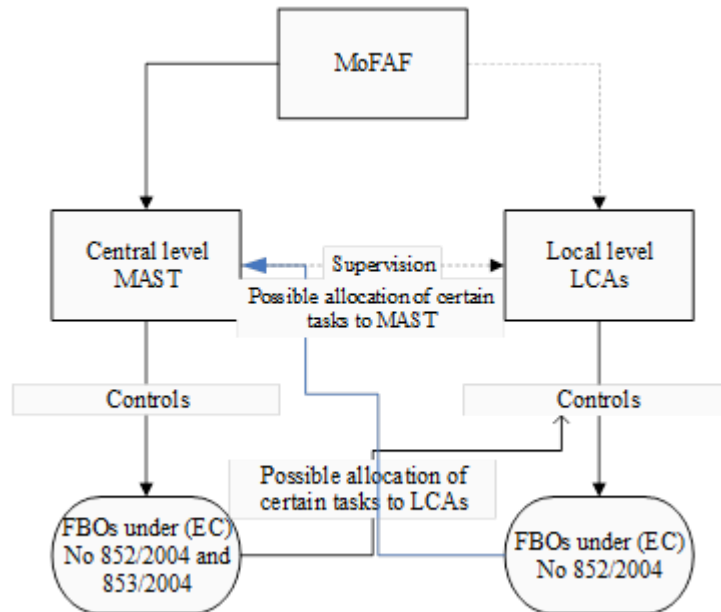
MAST operates a monitoring programme for contaminants in feed. Dairy plants operate own-control programmes for residues (every delivery is tested). Non-compliant results can be traced back to each farm and evidence of follow-up investigations by the dairy plants must be reported to the DVO.

- *Follow up of non-compliant results of official samples*
- In the case of non-compliant results, the Veterinary Officer of Residues decides which follow-up actions need to be taken, according to the written procedures in MAST's quality manual (VLY-102 or VLY-104) and, if necessary, informs, instructs and collaborates with the relevant DVO.

Laboratories

Six laboratories (situated in EU states/Iceland) analyse samples for MAST according to the Icelandic NRCP. The samples, which are analysed abroad, are compiled and prepared for shipment at the premises of Sýni Research Service. Information on official laboratories are [on MAST website](#).

2.8. Control system for foodstuffs and food hygiene



MAST	Icelandic Food and Veterinary Authority
MoFAF	Ministry of Food, Agriculture and Fisheries
FBOs	Food Business Operators
LCAs	Municipal Environmental and Public Health Offices

Competent authorities

The MoFAF is responsible for legislation on food safety, while the MoEEC is responsible for legislation on environmental protection and general hygiene. MAST is responsible for the supervision of LCA activities regarding food safety. In general, the LCAs are supervised by MAST although it has no direct legal power over the LCAs and may not give direct instructions or intervene in their day-to-day running. However, in cases of food-borne disease, MAST may intervene directly. According to the Food Act (IS) No 93/1995, MAST can also issue guidelines for specific areas that the LCAs must adopt.

MAST is the CA for FBOs approved according to Regulation (EC) No 853/2004 and the LCAs are the CA for all FBOs that fall under the scope of regulation (EC) No 852/2004 and not under the scope of Regulation (EC) No 853/2004.

Official controls of food premises

Each LCA develops an annual risk-based control plan which shall be submitted to MAST before 15. December each year. MAST compiles this information to obtain an overview and a plan for official control is published in MANCP in [the chapter operational objectives on MAST's website](#).

An inspection manual for official controls has been issued and can be found on [this link](#). There is no harmonised national register or database of food establishments as each LCA has its own register. Three LCAs use the database Isleyfur for their results of official control.

Good Hygiene Practice Guides (GHP)

MAST, in cooperation with the LCAs, has issued general guidelines on Good Hygiene Practices. Several other guidelines have been issued and they are all available on MAST website. These guidelines include small waterworks, personal hygiene, guidelines for packaging rooms etc.

Potable water

The Ministry of Food, Agriculture and Fisheries is responsible for the implementation and application of EEA legislation on official control of potable water. Directive 98/83/EC on the quality of water intended for human consumption, was incorporated into the Icelandic internal legal order by Regulation (IS) No 536/2001, which entered into force on 28 June 2001. According to Article 12 of that regulation, the LCAs are responsible for official controls under MAST's supervision. The ten LCAs are responsible within their municipalities for the surveillance of quality of potable water. MAST is responsible for supervision and coordination and issuing of guidelines.

Under the responsibility of the Environment Agency (Ministry of the Environment), the LCAs also play a role concerning provisions related to the necessary protection of the bodies of water used for the abstraction of drinking water and shall designate protective zones. LCAs can restrict the use of land and use and storage of polluting or dangerous substances in relation to abstraction sites for drinking water. LCAs are responsible for the implementation of Regulation (IS) No 796/1999 on the protection of water, Regulation (IS) No 797/1999 on the protection of groundwater and Regulation (IS) No 804/1999 on the protection of water from nitrogen compounds from agriculture and other businesses under the supervision of UST.

Food contact materials (FCM)

The Ministry of Industries and Innovation is responsible for the legislation on FCMs in Iceland. Official control of FCMs business operators (producers and importers) is under the responsibility of the municipal control districts, the LCAs within their respective regions. In the end of 2013, an amendment to the Food Act (IS) No 93/1995 was made (Act (IS) No 143/2013) to clarify further the role of the LCAs regarding official control of FCM producers and importers. The official control of users of FCMs (food business operators) is the responsibility of the respective competent authority that is responsible for the main activities of the establishment, i.e. either LCAs (retail level, food of non-animal origin establishments) or MAST (food of animal origin establishments). MAST is in charge of coordination and supervision of LCAs, issues guidelines and is responsible for ensuring a harmonised approach for the controls by the LCAs.

RASFF

Iceland has been a full member of the RASFF system since 1994 with MAST as the National contact point (NCP). One person is responsible at MAST but with a replacement when needed. The system ensures that urgent notifications are sent, received and responded to quickly. NCP is on duty and notifications monitored 24/7. (Commission Regulation (EC) No 16/2011 established RASFF first in Article 50 of regulation (EC) No. 178/2002 and in OCR (EC) 2017/625 with IMSOC the Information Management System for official controls to link all existing and future IT systems managed by the Commission (e.g. TRACES, RASFF and Europhyt)).

The NCP ensures the immediate transmission of information provided by national food and feed control authorities through the RASFF upstream to the European Commission through iRASFF. The EFTA Surveillance Authority informs Iceland's NCP when Iceland is mentioned in the daily notification list. Guidelines about recalls and withdrawals are in the MAST Quality manual.

If a product (food, feed or FCM) has already been imported, action is taken to eliminate the hazard to human or animal health. The NCP informs the LCAs or the appropriate unit within MAST and co-ordinates the action to be taken (e.g. checks on the domestic market, recall and withdrawal of the product by the distributor). The investigation must take into account the distribution of the products and the nature of the notification. Details of cases are published on MAST's website and sent to the press. In serious cases, an

announcement is sent to the Chief Epidemiologist in Iceland. Iceland's response is conveyed to the EEA Member States *via* the RASFF system (iRASFF).

Food fraud

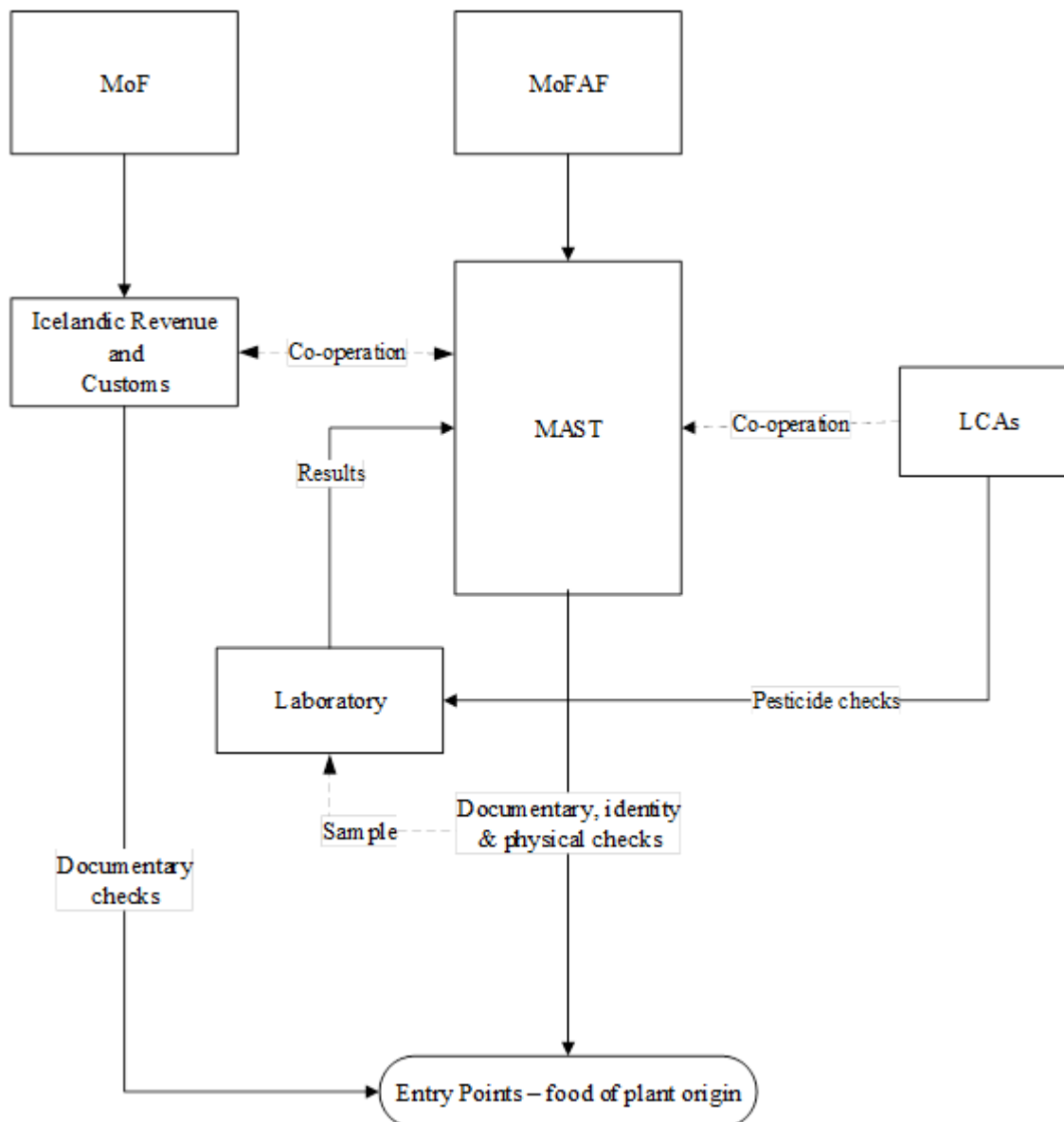
Iceland has been member of EU food fraud network and participated in network meetings from 2013. Member States and some other European countries get to exchange information and to cooperate on a voluntary basis in matters where they are confronted with violations of the EU agri-food chain legislation of cross-border nature.

The communication is through AAC network (administrative assistance cooperation in the areas of food and feed) which deal with non-compliances and other violations of the EU agri-food chain legislation. That includes food fraud which is often not a food safety issues.

MAST has participated in Europol project Opson for many years with cooperation from the Icelandic customs and police. A Nordic food fraud project will result in Nordic guidelines for Food fraud published in summer 2020. A national seminar with experts from USA was held in autumn 2019 for official inspectors at LCAs and MAST, customs and police.

Monthly reports from EU food fraud network and regular meetings physical and online are very useful for fighting food fraud across borders in EEA countries.

2.9. Control system for imports of food of non-animal origin



LCAs Municipal Environmental and Public Health Offices

MAST Icelandic Food and Veterinary Authority

MoF Ministry of Finance

MoFAF Ministry of Food, Agriculture and Fisheries

Competent authorities

The Office of Import and Export of MAST is part of the division of Cooperation. The office is responsible for import controls on food of non-animal origin in co-operation with Iceland Revenue and Customs. In special cases the MoFAF may grant exemptions from the provisions of the import regulation to allow import of prohibited commodities.

Import controls

The main priorities for controls on imported foodstuffs are a) monitoring of pesticide residues b) participation in RASFF and c) documentary checks on foodstuffs where

specific import restrictions have been laid down in EEA legislation or an import permit is required.

MAST co-operates with Iceland Revenue and Customs to ensure that products subject to import restrictions are not imported without documentary checks by MAST prior to import. However, MAST has restricted access to the customs database.

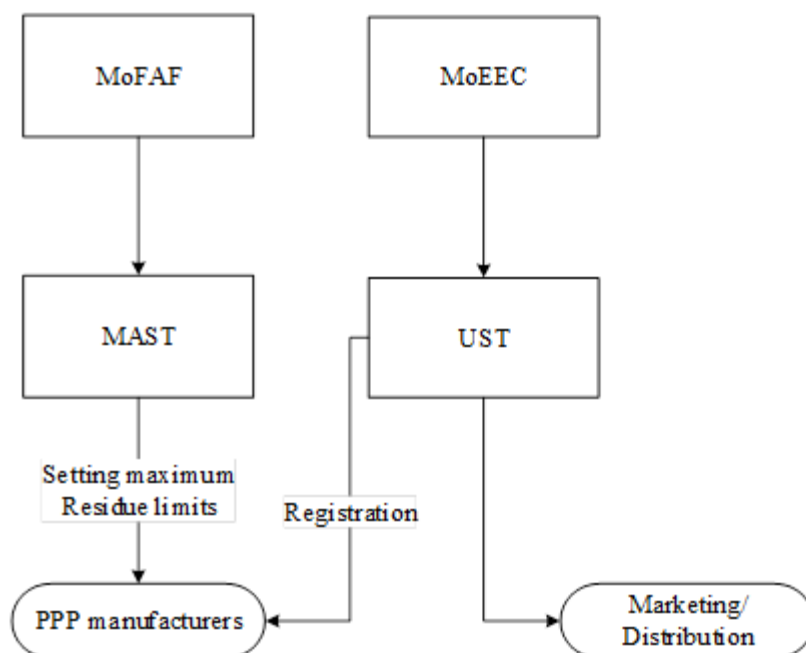
MAST charges fees for approval of the import of specific products (identified by tariff codes laid down in the relevant EEA legislation).

MAST import and export office implements and follows up the EU legislation for risk products of non-animal origin laid down Regulation (EC) No 2017/625 and other regulations concerning safeguard measures.

MAST inspects food of non-animal origin at the facilities of the BCPs. Samples have been taken at BCPs according to the frequency listed in Annex 1 of Commission Implementing Regulation (EU) No 2019/1793 or other implementing EU import regulations regarding products of non-animal origin. This was done with separation in time to avoid cross-contamination with food of animal origin. All samples taken for analysis were packaged consumer units.

2.10 Control system for plant protection products (PPP) and residues

Plant protection products



MAST	Icelandic Food and Veterinary Authority
MoEEC	Ministry of Environment, Energy and Climate
MoFAF	Ministry of Food, Agriculture and Fisheries
PPPs	Plant Protection Products
UST	Environment Agency of Iceland

Competent authorities

MoEEC is responsible for the Chemical Act No 61/2013 and legislation on plant protection products. UST is responsible for ensuring that the Chemical Act No 61/2013 are followed, and for the official control of plant protection products on the market.

Official controls on marketing/use of PPPs

All Plant protection products placed on the market in Iceland must have an authorisation granted by UST according to Chemical Act No 61/2013 and national regulation No 544/2015 on plant protection products (implementing Regulation (EU) No 1107/2009) and be labelled in accordance with the current regulation on classification, labelling and packaging of substances and chemical mixtures.

UST carries out official control of plant protection products on the market. Official control can be a part of implemented market surveillance plan, control where data are requested (written control) or control following a report on possible violation. In the event of non-compliance, a follow-up case is established where the requirements for corrective action are stressed, and the use of coercive measure or administrative fines can be applied. Products that don't comply with legislation regarding authorisation, labelling, packaging etc. may be removed from the market.

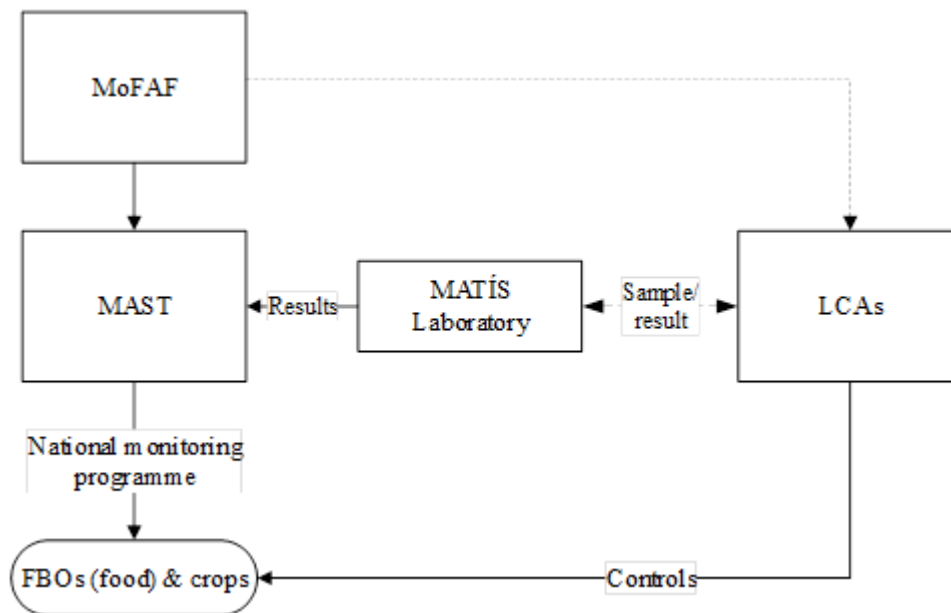
The marketing of PPPs for professional use must be notified to UST. A user permit issued by UST is required for professional use of PPPs. Import statistics on PPPs pesticides are collected by UST through data received from Iceland Revenue and Customs and importers. Distributors must provide information on sales of PPPs for professional use.

A register of PPPs is available in UST's website.

Obsolete pesticides

The UST can confiscate any obsolete PPPs found on the market. Stocks of obsolete PPPs are treated as hazardous waste.

Residues



FBOs Food Business Operators

LCAs Municipal Environmental and Public Health Offices

MAST Icelandic Food and Veterinary Authority

MoFAF Ministry of Food, Agriculture and Fisheries

Competent authorities

MoFAF is responsible for setting maximum residue levels (MRLs) of pesticides and legislation on control of pesticide residues. MAST is responsible for pesticide residue monitoring programmes. The control of primary producers of vegetables and berries and of importers as well as sampling and enforcement actions when needed are carried out by the LCAs.

Official controls on residues

Sampling and monitoring plans

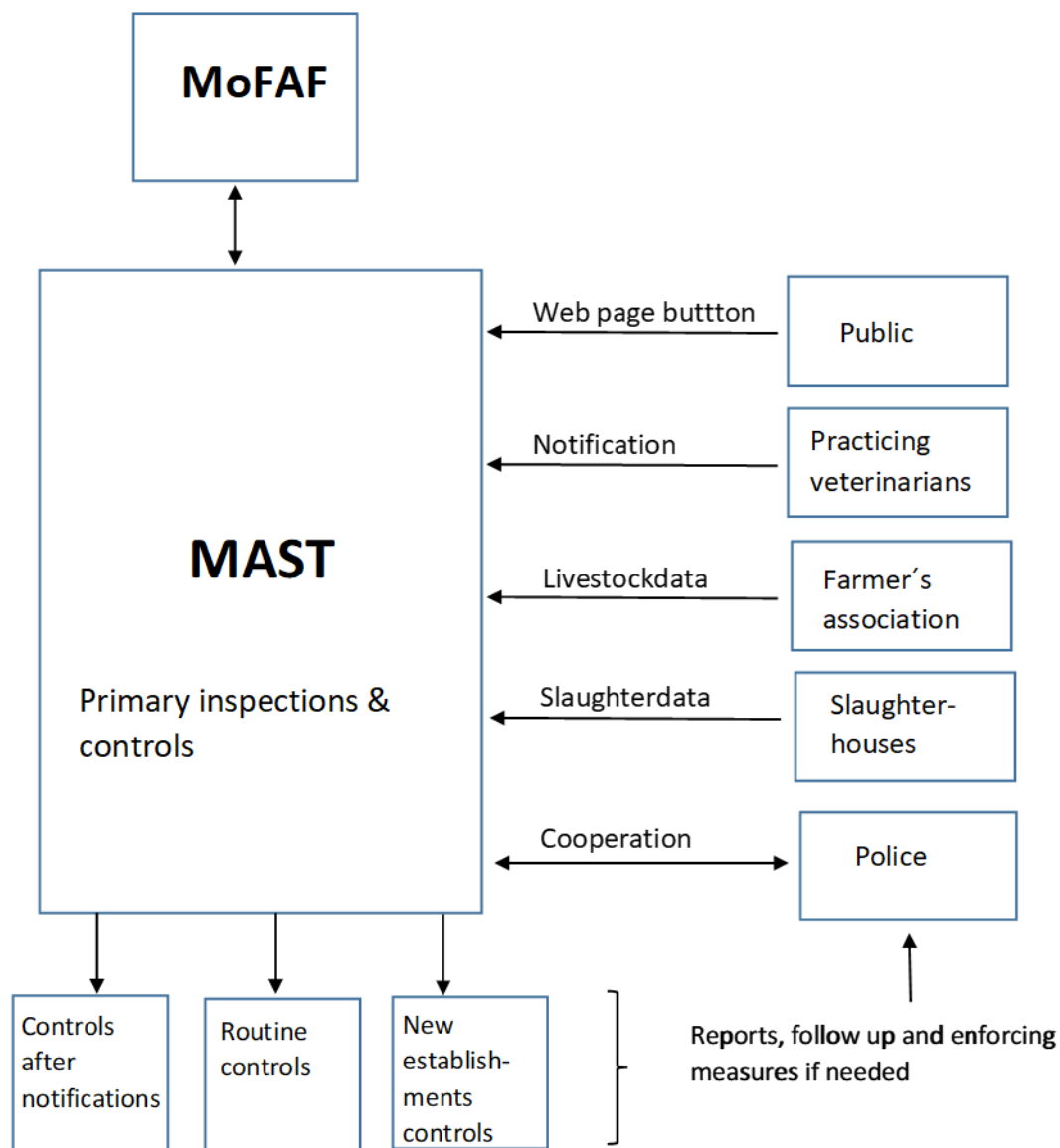
A multiannual sampling plan for pesticide residues, drawn up by MAST, is in place for the national monitoring programme. The sampling plan is based on import volumes and domestic production and past results from the monitoring programme. It also takes account of the products where pesticide residues are most often found and the co-ordinated EU monitoring programme.

Reykjavik LCA and Hafnarfjörður LCA and Suðurnes LCA carry out all sampling and enforcement on imported products as almost all products are channelled through their regions where samples are taken at the importer's warehouses. An annual sampling plan, based on the multi-annual sampling plan, is drawn up by MAST. About 13% of samples on the plan are to be from domestic production, taken by the relevant LCA, at retail level, or during inspection at the farm.

Enforcement

When a pesticide residue exceeds the MRL, enforcement action is taken if the pesticide residues in the sample exceed the MRL in addition to measurement uncertainty of the analysis. Provisions on MRLs are contained in Regulation (IS) No 672/2008 on maximum levels of pesticide residues in food and feed, incorporating relevant EEA legislation.

2.11. Control system for animal welfare



MAST Icelandic Food and Veterinary Authority

MoFAF Ministry of Food Agriculture and Fisheries

Competent authorities

MAST is responsible for animal welfare and for ensuring that the Animal Welfare Act (IS) No 55/2013 and secondary regulations are followed. Iceland is not obliged to implement the EU *acquis* regarding animal welfare except rules concerning protection of animals at the time of killing. Regulation (EC) No 1099/2009 on the protection of animals at the time of killing has been incorporated with Regulation (IS) No 911/2012.

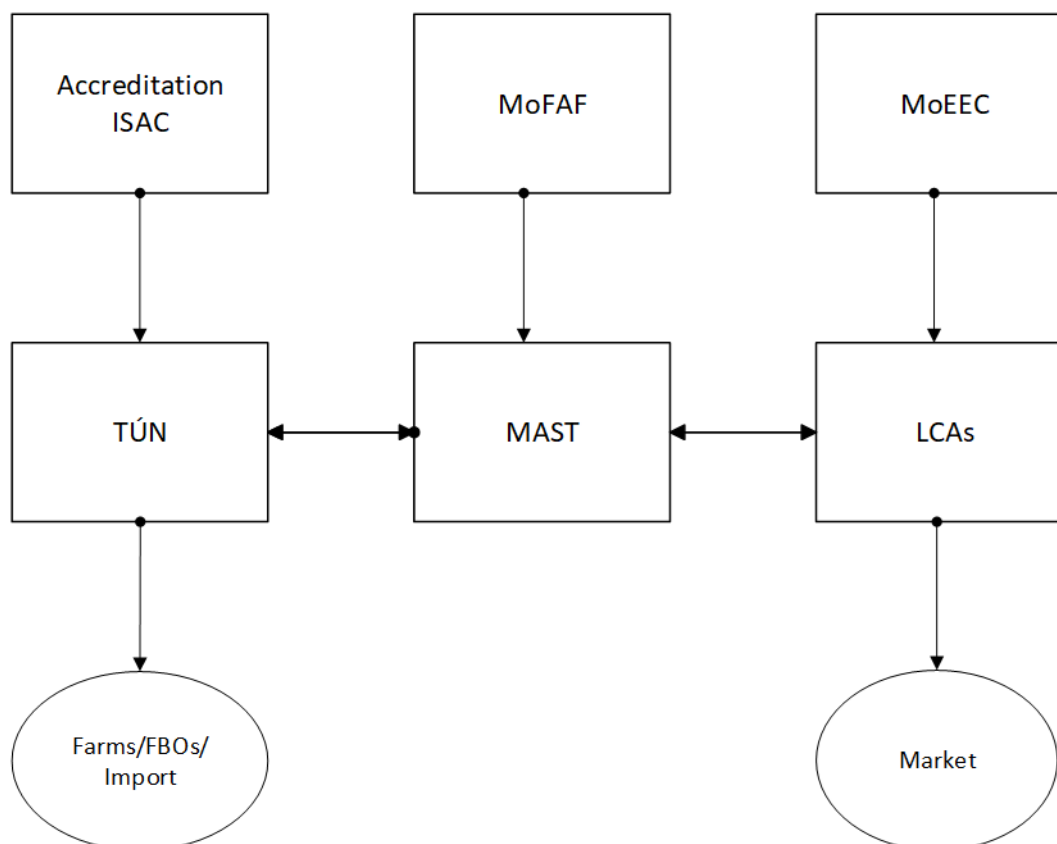
The system of official controls on animal welfare in Iceland is shown in figure 2.11. MAST commonly gets notification of concern from the public through a “notification button” on MAST web page. Animal farms are inspected according to a risk-based assessment. All notifications from public are registered electronically in MAST system and followed up by Animal Welfare Inspectors (AWIs) or OVs. The majority of inspections consists of routine inspections performed by OVs and AWIs at farms and in different animal holdings in their region. OVs perform daily official controls of animal welfare in slaughterhouses and

DVOs, OVs and AWIs routine inspections/audits, occasionally with senior veterinary officers from central office for coordination purposes between districts. Senior officers from the Division of coordination (have the responsibility of supervising coordination between districts for inspections and follow up.

All inspections are registered, and reports written in the database IS-leyfur that also keeps records of follow ups. If needed cases are transferred to an adhoc team of the DVO, VO for the animal species and a lawyer for enforcement.

Regulation (EC) No 1/2005 on the protection of animals during transport and related operations is not applicable to Iceland under the EEA Agreement. However, Regulation (IS) No 527/2017 is to a large extent based on Council Regulation (EC) No 1/2005, including a registration system for licensed haulers.

2.12 Control system for organic production



MAST is the competent authority for organic production in Iceland. MAST has delegated the authority to carry out official controls of organic operators to the Control Body Vottunarfélag Tún according to an agreement between the two parties.

A list of certified operators can be found on [TÚN's homepage](#)

Sampling of organic products is under the responsibility of TÚN as a part of official monitoring on certified operators, both sampling and additional audits are based on a risk assessment.

Official controls on food on the market and labelling of food is the responsibility of the LCAs based on the Food Act No 93/1995.

MAST has further responsibility for supervisory activities based on the requirements in Regulation (EU) No 2018/848.

MAST is the competent authority for performing import controls of organic products.

ANNEX I – ACRONYMS, ABBREVIATIONS AND SPECIAL TERMS

ACRONYM	DESCRIPTION
ABP	Animal By-Products
ADIS	Animal Diseases Information System
AWI	Animal Welfare Inspectors
BCP	Border Control Post / <i>Landamærastöð</i>
BKD	Bacterial Kidney Disease
BSE	Bovine Spongiform Encephalopathy
CCA	Central Competent Authority
CHED	Common Health Entry Document for products of animal origin and for live animals
CVO	Chief Veterinary Officer / <i>Yfirdýralæknir</i>
DoF	Directorate of Fisheries / <i>Fiskistofa</i>
DoH	Directorate of Health
DTU	Technical University of Denmark
DVO	District Veterinary Officer / <i>Héraðsdýralæknir</i>
EA	European Co-operation for Accreditation
EC	European Community
EEA	European Economic Area / <i>Evrópska efnahagssvæðið</i>
EEA Agreement	Agreement on the European Economic Area
EFTA	European Free Trade Association
ESA	EFTA Surveillance Authority
EU	European Union
FBO	Food Business Operator / Feed Business Operator
FCM	Food Contact Material
FTE	Full Time Employees
GMO	Genetically Modified Organism(s)
HACCP	Hazard Analysis and Critical Control Points
IHN	Infectious Haematopoietic Necrosis
ILAC	International Co-operation for Laboratory Accreditation
IMA	Icelandic Medicines Agency
IPN	Infectious Pancreatic Necrosis
IRC	Icelandic Revenue and Customs / <i>Skatturinn</i>
IS	(unique) Establishment Number
ISA	Infectious Salmon Anaemia
ISAC	Icelandic Board for Technical Accreditation
ISO/IEC	International Standards Organisation

ACRONYM	DESCRIPTION
ISK	Icelandic currency (Krona)
ISPM	International Standard for Phytosanitary Measures
IS-leyfur	A MAST database which contains an active list of all approved establishments producing food of animal origin or feed and information concerning official controls
IT	Information technology
JC	Joint Committee on Health Security and Communicable Disease Control
JCD	Joint Committee Decision
LBM	Live Bivalve Molluscs
LCA	Local Competent Authority / <i>Heilbrigðiseftirlit sveitarfélaga</i> (Municipal Environmental and Public Health Offices)
MANCP	Multi Annual National Control Plan
MANIAP	Multi-Annual National Internal Audit Plan
MARK	Icelandic interface for Domestic Animals
MAST	The Food and Veterinary Authority / <i>Matvælastofnun</i>
MBM	Meat and Bone Meal
MLA	Multilateral Agreement for Laboratories
MoEEC	Ministry of the Environment, Energy and Climate
MoEd	Ministry of Education
MoF	Ministry of Finance
Mol	Ministry of Interior
MoFAF	Ministry of Food, Agriculture and Fisheries
MoH	Ministry of Health
MRL	Maximum Residue Limit
MS	Member State
NCP	National Contact Point
NRCP	National Residue Control Plan
NRL	National Reference Laboratory
NMKL	Nordic Committee on Food Analysis
OIE	World organisation for animal health
OV	Official Veterinarian
PONAO	Products of non-animal origin
PPP	Plant Protection Product(s)
PVP	Private Veterinary Practitioner
RASFF	Rapid Alert System for Food and Feed
SHÍ	The Association of Regional Health and Environment Authorities / <i>Samtök heilbrigðiseftirlitssvæða á Íslandi</i>

ACRONYM	DESCRIPTION
SRM	Specified Risk Material
SWEDAC	Swedish Board for Accreditation and Conformity Assessment
TAIEX	Technical Assistance and Information Exchange instrument
TRACES	Trade Control and Expert System
TSE	Transmissible Spongiform Encephalopathy
UK	United Kingdom
UST	Environment Agency of Iceland
VHS	Viral Haemorrhagic Septicemia
VLA	Veterinary Laboratories Agency
VMP	Veterinary Medicinal products
Worldfengur	Equine Database (owned by the breeders)